

PhD Potential Supervisors

College of Health Sciences

Department of Biomedical Sciences

Prof. Asmaa Ali J F Althani,

PhD Professor, Director of Biomedical Research Center
Qatar University, Chair of Qatar Genome Program
Committee, Board Vice Chairperson - Qatar BioBank
Building I03, Room
234P.O. Box 2713
Doha, Qatar
Email: aaja@qu.edu.qa

[Profile Website](#)

Prof. Al-Thani is the founder and director of the Biomedical Research Center in Qatar University. She is the founder and previous dean of the College of Health Science at Qatar University. Prof. Al-Thani has also fulfilled roles as Adjunct Assistant Professor in the Department of Microbiology and Immunology at Weill Cornell Medical College in Qatar since 2011, as Vice Chairperson of the Qatar Biobank Board since 2010, a Qatar Foundation nominate for Chair of the National Genome Qatar Committee in December,2013.Prof. Al-Thani has numerous published articles in her field of expertise. She works as reviewer for several scientific journals and conferences and is a member in the American Society for Microbiology She received multiple academic awards including the First Prize of Sheikh Hamad Bin Rashid for Culture and Sciences for research in December 2006 and was awarded a prize from the Al-Jasra Cultural Club-Qatar for student research. More recently, in Feb 2019, she was awarded the "Incentive State Award" in the field of allied medical sciences and nursing and she was honored from the Amir H.H. Sheikh Tamim bin Hamad Al Thani.

Dr. Maha Al-Asmakh, MSc, PhD

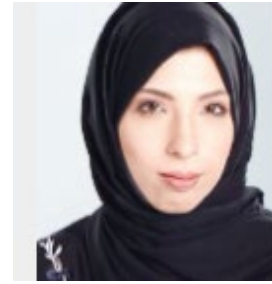
Associate Professor of Biomedical Sciences,
Department Head

Building I06, Room SA1.19

P.O. Box 2713 Doha, Qatar

Email: maha.alasmakh@qu.edu.qa

[Profile Website](#)



Dr. Maha Al-Asmakh is the Head of the Department of Biomedical Sciences at the College of Health Sciences, Qatar University, a position she has held since September 2020. She earned her Bachelor of Science (BSc) with Honors in Biomedical Sciences from Qatar University, followed by a Master of Science (MSc) in Human Reproductive Biology from Imperial College London. She then completed her Ph.D. at the prestigious Karolinska Institute in Stockholm, Sweden.

Dr. Al-Asmakh's research interests lie in the fields of microbiome science and zebrafish-based toxicology models. Her work focuses on understanding the impact of environmental and physiological factors on health, using zebrafish as a model organism to study toxicological and microbiome-related mechanisms. Her multidisciplinary approach contributes to the growing body of research on host-microbiome interactions and their implications for human health and disease.

In addition to her academic role, Dr. Al-Asmakh serves as an Adjunct Research Associate Professor at the Biomedical Research Center (BRC) at Qatar University. She is an active member of various academic and research committees at both the departmental and university levels, contributing to strategic planning, curriculum development, and research capacity building.

Dr. Al-Asmakh is also involved in the wider scientific community. She is a peer reviewer for several international scientific journals and research grant agencies, and a member of the International Society of Microbiota, reflecting her engagement with global developments in her field.

Dr. Mashaal Al-Shafai, PhD

Associate Professor, Department of Biomedical
Sciences Qatar University
Po Box: 2713 Doha, Qatar
Building I06, Room SA4.10
Phone [+974 4403 5589](tel:+97444035589)
Email: malshafai@qu.edu.qa



[Profile Website](#)

Dr. Mashaal Al-Shafai is an Associate Professor of Biomedical Science (Human Genetics) and Strategic Advisor at the QU Health Sector, Qatar University. She received her Bachelor's degree with honors in Human Genetics from the University of Leeds (UK) in 2009, followed by a PhD in Clinical Medicine Research from Imperial College London in 2016.

Dr. Al-Shafai joined the Department of Biomedical Sciences at the College of Health Sciences as an Assistant Professor, where she played a leading role in establishing Qatar's first Master's program in Genetic Counselling, launched in 2018. She served as Head of Research and Graduate Studies at the College of Health Sciences from Fall 2020 to Fall 2022, followed by her appointment as Director of Graduate Studies at QU Health in Fall 2022. She currently serves as a Strategic Advisor in the Office of the Vice President for Health and Medical Sciences.

Her research focuses on the genetics and genomics of Mendelian disorders, including familial forms of complex diseases such as obesity. The development of the genetic counselling master's program also sparked her interest in genetic counselling research.

Dr. Al-Shafai was promoted to Associate Professor in May 2023. She has supervised 12 undergraduate, 9 master's, and 2 PhD students (ongoing). She has received several research grants from Qatar University and the Qatar National Research Fund (now QRDI Council), and has authored more than 30 peer-reviewed publications in international journals. She has actively contributed to national and international scientific forums and has represented Qatar in global organizations, including UNESCO.

She is a member of the Transnational Alliance for Genetic Counselling (TAGC) and serves on various national committees such as the Health Research Ethics Committee and the National Obesity Taskforce. Dr. Al-Shafai is also a member of the Qatar Genome Consortium and is currently leading the establishment of Qatar's first twin registry, the Qatar Twin Registry.

Prof. Ahmed M. Malki, PhD

Professor of Biomedical Sciences,
Acting Director of academic
Quality assurance

Building I03, Room 631
P.O. Box 2713 Doha, Qatar
Email: ldjoughri@qu.edu.qa

[Profile Website](#)

Prof. Ahmed Malki is acting director of academic quality assurance of QU Health. The central theme of my research is the understanding of the signaling pathways that regulate cell proliferation and cell death and designing novel anticancer drugs targeting the tumor suppressor p53. Signaling transduction pathways and networks have recently proven to be attractive targets for cancer therapy. Dr Malki's is also interested in investigating novel anticancer drugs that could be used alone or could be used as a therapeutic in conjunction with radiation for the treatment of cancer as radiosensitizers. More specifically, EGFR-Ras-PI3K-PTEN-Akt pathway which is the major radioprotective pathway active in most solid tumors and this pathway then presents targets that could be manipulated in a clinical setting to modify the radiation response. Dr Malki's team is interested in developing small molecules that specifically trigger cancer cells to undergo apoptosis and act as radiosensitizers. Chemotherapy even in combination with radiotherapy is only effective in a subset of the cancer patients. In the laboratory, we aim to optimize combination treatments based on molecular insights of tumors by targeting p53, Mdm2, Bax and Bcl-2. Pathway inhibition combined with novel drugs or different dosing schemes is evaluated in tissue culture and in vivo models in order to enhance therapeutic efficacy. In our collaboration with Lombardi Comprehensive Cancer Center at Georgetown University and Edison Institute of biotechnology at Ohio University, we identified novel compound with ability to elevate p53 was diminished by IR inhibitor and IR-siRNA, suggesting a non-conventional role of IR as being involved in p53 offering a new therapeutic strategy for eliciting apoptotic signal and inhibiting cancer growth.. Dr Malki received domestic and international grants in molecular therapeutics and supervised several master students who received their master degree in the field of molecular therapeutics. Prof. Malki has more than 25 years of academic experience and supervised more than 20 graduate students.

Dr. Gheyath K. Nasrallah, PhD, MT(AAB), M(ASCPi)

Associate Professor of Biomedical Sciences

Building I03, Room 426

Doha, Qatar

Gheyath.nasrallah@qu.edu.qa

[Profile Website](#)



I attended Dalhousie University/Halifax, Canada to pursue a PhD in Microbiology & Immunology in Dr. Rafael Garduno's lab. He received his postdoctoral fellowship training in Dr. Jason Berman's zebrafish lab at the IWK Health Center/Canada. After that, Dr. Nasrallah joined the College of Health Sciences/Department of Biomedical Sciences at the Qatar University (QU) in 2012 as an assistant professor. Dr. Nasrallah's lab is located in the Biomedical Research Center at Qatar University, Qatar. My lab main area of research is (serology/infectious disease). In addition, the lab is very well equipped and serves several area of research fields including (i) in vitro studies: using bacteria, yeast, and cell culture model and (ii) in vivo functional studies: toxicity and functional genomic using zebrafish animal models. Recently, the lab received several grants from QNRF (NPRP, PPM, UREP) and Qatar University (Internal Collaboration Grants and International Research Collaboration Co-Fund). My lab received several in-kind and financial supports from several diagnostic and pharmaceutical companies, including bioMérieux (France), Euroimmune and Novates Diagnostics (Germany) Abbott and MP Biomedical (USA), Mindray and Wondfo (China). The lab currently constitutes 5 graduate students, 4 undergraduate students, two research assistants, and a zebrafish facility technical manager. In the last five years, my students and I received several distinctions and awards. We published more than 150 original research and review articles in top cited Journals in the Medical field including the New England Journal of Medicine, the Nature Medicine, the Lancet Infectious Diseases, and The Journal in Travel Medicine. To find more about my lab, please <https://qu-gkn.com/>

Dr. Atiyeh Abdallah, MSc, PhD, FHEA, IBMS, ASCPI
Associate Professor of Biomedical Sciences,
Program Coordinator for Research & Graduate Studies
Lead - Rheumatology and Chronic Pain Research Group
Box: 2713, Doha, Qatar
Phone: +974 4403 7578
Email: aabdallah@qu.edu.qa



[Profile Website](#)

Dr. Atiyeh M. Abdallah is a biomedical scientist specializing in inflammasomes, inflammatory diseases, and the molecular mechanisms that drive chronic immune-mediated and musculoskeletal disorders. He serves as the Graduate Program Coordinator in the Department of Biomedical Sciences at Qatar University and leads the Rheumatology and Chronic Pain Research Group, where he contributes to academic leadership, graduate education, and interdisciplinary research aligned with national health priorities.

Dr. Abdallah's research focuses on innate immune sensors—particularly the NLRP3 and related inflammasomes—and their role in shaping inflammatory and metabolic responses. His work examines how genetic variations, cellular stress pathways, and molecular signaling networks regulate inflammasome activation and lead to disease states such as rheumatic disorders, chronic pain, and cardiometabolic inflammation. He integrates genomic analysis, molecular and cellular assays, and translational research approaches to identify biomarkers and mechanistic pathways that can improve diagnosis, risk prediction, and therapeutic intervention.

His current projects reflect this translational and population-focused approach. These include investigating inflammasome activity in cardiac disease models, studying immunometabolic modulators such as itaconate derivatives, and identifying genetic determinants of bone mineral density in the Qatari population using large-scale whole-genome sequencing data from the Qatar Biobank. Through these efforts, Dr. Abdallah contributes to expanding population-specific genomic knowledge and supporting precision medicine initiatives in Qatar.

In his role as educator and mentor, Dr. Abdallah supervises graduate students working in molecular immunology, genetic association studies, and diagnostic assay development. He teaches at both the master's and PhD levels, delivering courses on the molecular basis of disease, scientific integrity, bio-risk management, and advanced laboratory practices. As Graduate Program Coordinator, he oversees curriculum development, accreditation processes, and student academic progress, helping to ensure that trainees build strong scientific, analytical, and ethical competencies.

Dr. Abdallah has authored peer-reviewed publications in inflammation biology, human genetics, and molecular disease mechanisms, available through his ORCID profile (ORCID: 0000-0003-4812-956X). His scientific contributions advance the understanding of innate immune dysregulation and inform research on chronic inflammatory and musculoskeletal diseases, both regionally and globally.

Committed to fostering high-quality research and training, Dr. Abdallah welcomes PhD applicants interested in inflammasome biology, molecular immunology, functional genomics, and translational research on inflammatory and rheumatic disorders.

Dr. Layla Y. Kamareddine, MSc, PhD

Associate Professor of Biomedical Sciences,

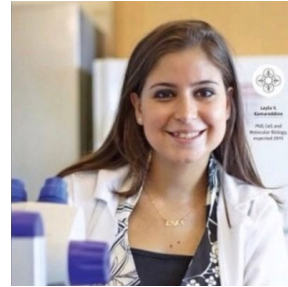
Building 103, Room 634

Qatar University

P.O. Box 2713 Doha, Qatar

Phone: 00974 4403 6015

Email: lkamareddine@qu.edu.qa



[Profile Website](#)

Dr. Layla Kamareddine is an innate immunologist and a vector biologist by training. Her interdisciplinary research unites vector biology, innate immunology, microbiology, and cell and molecular biology, and her main research interest falls in the context of host-pathogen interactions, with particular focus on the role of the innate immune system in blocking the development of a broad spectrum of pathogens (bacteria, fungi, parasites, and viruses), using well-established molecular and functional genetic tools. She is also interested in unravelling how the cross talk between innate immunity and different physiological processes, mainly metabolism, dictates a state of disease or health. The upshots of her research work revealed novel findings like the implication of melanization in anti-fungal immunity and the role of CLIPA2 (clip-domain serine protease homolog) in negatively regulating the complement-like protein TEP1 during systemic infections to control overwhelming host immune responses in the malaria vector, *Anopheles gambiae*. Her research findings also provided new insight into the functional interplay between lipid metabolism and immune gene regulation, by identifying a novel role of the Apolipoprotein II/I gene, encoding the two lipid carrier proteins APO- I and II, in negatively regulating TEP1. Dr. Kamareddine's research work also deciphered an innovative role of the gut microbiota and the Immune deficiency (IMD) innate immune pathway in regulating lipid homeostasis in the *Drosophila melanogaster* model organism, and unraveled the effect of activating *Vibrio cholerae* quorum sensing on the metabolic profile of an arthropod host. Dr. Kamareddine's publication record and ability to publish in high impact peer reviewed journals like *Immunity*, *Cell Metabolism* and *Nature Microbiology* reflects her research productivity. She also serves as an editorial board member and an ad hoc reviewer for peer-review journals and is a recipient of many prestigious research awards. For further information, please reach out.

Dr. Huseyin Yalcin

Associate professor

Biomedical Research Center (BRC)

Qatar University Po Box: 2713

Doha, Qatar

Email: hyalcin@qu.edu.qa



Profiles

<https://scholar.google.com/citations?user=QtMeO8wAAAAJ&hl=en>

<https://www.scopus.com/authid/detail.uri?authorId=16306009400>

Dr. Yalcin works as a research associate professor and principal investigator at Biomedical Research Center (BRC), Qatar University. His main research focus is investigating cardiovascular disorders from a mechanobiological perspective. Previously he was senior research scientist at Qatar Cardiovascular Research Center, faculty member of Dogus University, and postdoc at Cornell University Biomedical Engineering Department. He obtained his M.Sc. and Ph.D. in Bioengineering/Mechanical Engineering in 2003 and 2007 respectively from Lehigh University, USA, and B.Sc. degree in 2001 from Middle East Technical University, Mechanical Engineering Program, Turkey. Dr. Yalcin`s research interests span a wide range of topics in the basic, applied, and translational bioengineering. These involve, machine learning and computational modelling approaches for cardiovascular disease diagnosis and therapy planning; in vivo experimentation on chick embryo and zebrafish cardiac disease models; in vitro cardiac mimicking microfluidics systems; nanomedicine; and tissue engineered cardiac substitutes. He published more than 100 papers. Dr. Yalcin has received Young Scientist award form Turkish Science Academy in 2013 and Research Excellence Award in Qatar University in 2024. Dr. Yalcin secured more than \$3 million for his research funded by Qatar National Research Fund/ Qatar Research Development and Innovation Council, Qatar University, European Union FP7, and Turkish Science Foundation (TUBITAK) and organized many international scientific events including “The First International Biomaterials Conference” in Qatar in 2024 and “Tissue Engineering and Stem Cell Technologies Workshop” in 2017. He is the lead of Qatar University Biomedical Engineering Research Group. Dr Yalcin is Associate Editor in Chief for Springer`s Emergent Materials Journal.

Major Research Projects and interests:

2016-current: QU-BRC. Cardiovascular mechanobiology, biosensors, bioinstruments, microfluidics, telemedicine, tissue engineering, computational modeling, machine learning, Zebrafish, Chick embryo, nanomedicine

- Role of shear stress in endothelial deciliation in atherosclerotic diseases (Clinical, Zebrafish, In vitro),
- AI-enabled microneedle biosensor for critical care shock risk patients,
- Finite element analysis based deep learning system for transcatheter aortic valve implantation assessment,
- QU-Vitro: Programmable cardiovascular perfusion pumps for in vitro settings,
- Establishment of advanced Zebrafish gene editing techniques in BRC,
- Mechano-biological Development of Congenital Heart Defects (chick embryo and prenatal clinical)
- Nitric-oxide releasing nanoparticles in treatment of cardiovascular diseases (in vitro and Zebrafish)
- Assessment of natural compounds as anti-cancer agents (Zebrafish Xenograft)
- AI based medical imaging, computational modeling tool for aneurysm detection and diagnosis
- AI based medical imaging, computational modeling tool for congenital heart disease diagnosis
- Small animal physiological monitoring and imaging system for heart function assessment

Department of Public Health

Prof. Hanan F. Abdul Rahim
Dean College of Health Sciences
Qatar University Po Box: 2713
Doha, Qatar
Office Telephone: +974 4403 3023
Hanan.arahim@qu.edu.qa



Dr. Hanan F. Abdul Rahim is an Associate Professor and the Dean of the College of Health Sciences at Qatar University. She has a PhD in Epidemiology and Preventive Medicine from the University of Oslo, Norway (2003); a MSc in Biology from Illinois State University, IL, USA (1994), and a BSc in Biology from Salem College, NC, USA (1992).

Dr. Abdul Rahim has over 20 years of experience in the field of public health. She is the founding Coordinator of the BSc in Public Health program (2012-2014) at Qatar University, one of the founding faculty members of Qatar's first Master of Public Health (MPH) program (2015), and was the Head of the Department of Public Health between 2017 and 2019. In 2008, Dr. Abdul Rahim became one of the founding members of the Social and Economic Survey Research Institute (SESRI) at Qatar University, the country's first academic-based survey research organization. She teaches epidemiology and research methods in the MPH program.

Dr. Abdul Rahim's research interests are at the intersection of social science and public health, with a special interest in the social determinants of noncommunicable diseases and the health and wellbeing of women. She has participated in a number of funded research studies and has authored a range of research and policy-oriented articles and reports in leading academic journals, including the Lancet, Health Policy, and Health Policy and Planning.

Dr. Karam Turk-Adawi

Associate Professor of Public Health

Qatar University Po Box: 2713 Doha, Qatar

Telephone: ++974 4403 7508



kadawi@qu.edu.qa

Google scholar: <https://scholar.google.com/citations?user=0EgUebgAAAAJ&hl=en>

ORCID: <https://orcid.org/0000-0002-4162-7761>

Dr. Karam Turk-Adawi is an Associate Professor and the Head of the Department of Public Health at the College of Health Sciences, Qatar University. She earned her PhD from Brandeis University, MA, USA. She has two Master's degrees in Public Health and in Social Science. Dr. Turk-Adawi had a post-doctoral fellowship at York University and held a research role in conducting global studies at the University Health Network, Canada.

She has over 20 years of teaching and research experience in academic institutions and international organizations, such as the World Health Organization, the International Council of Cardiovascular Prevention and Rehabilitation (ICCPR), and other professional associations that address heart diseases such as the American, and Canadian associations for cardiovascular disease prevention and rehabilitation (AACVPR, and CACPR).

Dr. Turk-Adawi's research centers on non-communicable diseases, health services, global health, health policy, quality of care, cardiac rehabilitation and clinical registries. She has published over 40 papers in top-tier journals, such as the Lancet, Nature, and Circulation. She also authored clinical practice guidelines. She has a well-established reputation in cardiovascular disease (CVD) epidemiology regionally and globally. Dr. Karam co-led the first-ever Global Cardiac Rehabilitation Survey (<http://globalcardiacrehab.com/global-cr-program-survey/>). She has been influential in the development of the International Cardiac Rehabilitation Registry (<https://globalcardiacrehab.com/ICRR-Governance>) with international experts. Dr. Turk-Adawi is also leading the development of Qatar National Cardiac Rehabilitation Registry. She secured several grants to conduct her research as the lead PI. She has successfully supervised several master and PhD students as the main supervisor. Dr. Karam has served on national and international committees. She is the Co-Chair of the International Cardiac Rehab Registry. She served on the World Health Organization's expert panel for the development of the Rehabilitation Package 2030 for Ischemic Heart Disease. She also served as a reviewer of consensus and position statements and clinical guidelines on cardiac rehabilitation. Her contribution to global research on CVD was covered by international and local media extensively.

Dr Mujahed Shraim

Associate Professor of Public Health

Telephone: +974 4403 7503

mshraim@qu.edu.qa

https://scholar.google.com/citations?user=5L9Fp_cAAAAJ&hl=en



Dr. Mujahed Shraim is an Associate Professor of Public Health (Epidemiology). He joined Qatar University in 2017. He holds a PhD in Epidemiology from Keele University, UK. He has completed a two-year post-doctoral fellowship in Epidemiology and Health Services research from University of Massachusetts Lowell, USA.

Dr. Shraim has published in international peer review journals on various topics, including non-specific physical symptoms among children and parents, factors associated with geographic variation in length of work disability in workers with occupational low back pain in the USA and associated factors, and other topics in mental health and clinical epidemiology.

Dr. Shraim has successfully supervised eight Master of Public Health theses as main supervisor and one PhD thesis as co-supervisor. He has taught several courses at undergraduate and graduate levels, including epidemiology, public health, research methods, biostatistics, classification of diseases, and first aid.

Dr. Shraim is a member of the National Cancer Screening Program in Qatar and is a member of the Primary Health Care Corporation Scientific Research Subcommittee.

Dr. Mohammed Fasihul Alam
Associate Professor of Public Health
Telephone: ++974 4403 4784
malam@qu.edu.qa



Dr. Mohammed Fasihul Alam is an Associate Professor (Graduate Faculty) of Public Health at the Department of Public Health, College of Health Sciences, Qatar University. Dr. Alam has a PhD in Operational Research from Cranfield University, UK (2004); an MSc in Health Economics and Health Policy from the University of Birmingham, UK (2015); an MSc in Statistics and BSc (Hons.) in Statistics from the University of Chittagong, Bangladesh (1994, 1992). He has more than 20 years of experience in academic teaching and research in health economics, public health, statistics and operational research, and worked at a number of universities in England, Germany, Wales and Bangladesh.

Dr. Alam is an experienced researcher who has supervised more than 12 MSc/MPH these students as a main supervisor at Qatar University and Swansea University (UK) and co-supervised 3 PhD students. He has a strong track record of publishing scientific research findings in peer-reviewed high impact journals and has more than 50 publications in his credit. Dr. Alam has a good record of accomplishment of securing competitive research grants from major national and international funding agencies (e.g. NIHR HTA, NIHR Public Health Program, MRC, Community Pharmacy Wales, British Council, Qatar University) as a PI/Co-PI. His research grants generated a total of approx. £5.5million. Dr. Alam's research interests cover

- Health Policy Evaluation/Research
- Evidence generation for PH programs/interventions
- Economic evaluation alongside clinical trials
- Decision analytical model based cost-effectiveness analysis
- Economics of primary care infections, public health programs, IBD, COPD and Oncology
- Application of artificial intelligence in healthcare research

Over the years, I co-investigated more than 10 major research grants/projects, mainly RCTs and observational studies in the area of health technology assessment, public health programs – covering economics and epidemiology of primary care infections, adolescent drinking, antimicrobial resistance, inflammatory bowel disease, oncology, cancer screening, etc. Dr. Alam is looking forward supervising post-graduate thesis project(s) on a suitable topic falls in these areas.

Externally, Dr. Alam is a member of the National Screening Advisory Sub-Committee of Ministry of Public Health (MoPH) in Qatar, and currently leading a feasibility study on Lung Cancer screening program in Qatar. During 2010-2015, Dr. Alam served as an independent health economist on new medicines & technologies appraisal process for All Wales Medicine Strategy Group (AWMSG) in the UK. Currently, he is an Associate Editor of the *BMC Health Services Research* journal, also act as a reviewer for the HMC Internal Grants, ISPOR Conference, *NIHR HTA and Public Health Program*, *European Journal of Public Health*, *Value in Health*, *PLOS ONE*, *BMC Public Health*, *BMC Health Services Research*, *Simulation Modelling Practice and Theory*. Dr. Alam is a Fellow of the UK Royal Society for Public Health (RSPH). He is a founding member of the Surrey Global Health Research Network (SGHRN), based at University of Surrey (UK). SGHRN was established in 2019 to collaborate research on global health issues which has international academic members from Peru, Kenya, South Africa, Qatar and UK.

Dr. Manar El-Hassan

Associate Professor

Telephone: +974 4403 7506

melhassan@qu.edu.qa



Dr. Manar Elhassan is trained and expert in Biostatistics and Epidemiology, awarded a PhD from Boston University (USA), an MSc in Statistics from University of Kent at Canterbury (UK) and a BSc in Statistics and Computer Science from University of Khartoum (Sudan). She is currently an associate professor of Biostatistics at the Department of Public Health, College of Health Sciences, Qatar University. She previously worked on cancer survival at the Non-communicable Disease Epidemiology Unit at the London School of Hygiene and Tropical Medicine (UK). She also worked on cancer survival of Atomic bomb survivors at the Radiation Effects Research Foundation in Hiroshima (Japan). Manar was previously employed at the Faculty of Mathematical Sciences, University of Khartoum holding positions of Head of Statistics Department, Deputy Dean and Dean of the Faculty. Over the past two decades, Manar has been involved with household surveys, mainly Multiple Indicator Cluster Surveys (MICS) and Demographic and Health Surveys (DHS). She served as household survey expert for many countries as well as the regional consultant for UNICEF Middle East and North Africa Region. Her research interests include wide statistical and epidemiological applications of health and clinical data using advanced statistical modeling, discrete data analysis, survival analysis, clinical trials and analysis of complex survey data on women and children health. She contributed extensively to research on cancer survival, oral health, antibiotic use, mycetoma neglected disease and diabetes in pregnancy. Manar is also interested in data science, particularly predictive modeling using machine learning. She is currently a principal investigator in a number of NPRP grants.

Department of Nutrition Sciences

Dr. Maya Bassil

Associate Professor of Human Nutrition

Qatar University, Doha 2713

Tel:

Email: bassil.maya@qu.edu.qa

Research profile: [Google Scholar](#)



Dr. Maya Bassil holds a PhD in Human Nutrition from McGill University, Canada (2011) and is currently an Associate Professor of Human Nutrition and the head of the Human Nutrition Department in the College of Health Sciences at Qatar University (QU). She also holds a BS in Nutrition & Dietetics (2003) and a MS in Human Nutrition (2005) from the American University of Beirut in Lebanon, and she is a licensed dietitian.

Dr. Bassil's research interest addressing Nutrition in obesity and diabetes as part of the inter-professional disease management. Dr. Bassil has published in several top tier reputable journals; she is a recipient of several awards, and serves as an editorial board member and an ad hoc reviewer for various peer-reviewed journals.

Prof Zumin Shi

Professor of Human Nutrition

Qatar University, Doha 2713

Tel:

Email: zumin@qu.edu.qa



Dr Zumin Shi is Professor of Nutrition at the Human Nutrition Department, College of Health Sciences at Qatar University. He earned a medical degree from Beijing Medical University. He pursued a Master's degree in International Community Health and a PhD in Nutritional Epidemiology from the University of Oslo after completing 13 years of experience in nutrition and food borne disease prevention at Jiangsu Provincial Center for Disease Control and Prevention in China. He later held postdoctoral positions at the University of Newcastle and the University of Oslo. Dr. Shi was an associate professor at the University of Adelaide before joining Qatar University in 2018. His research interest focuses on the relationship between food intake, lifestyle and chronic diseases. He is the principal investigator of several population studies in China, Australia and Qatar. Dr Shi has over 260 peer-reviewed publications with a Scopus H index of 40. He is actively involved in various research within Qatar, China, Australia, and USA.

Prof. Reema Tayyem, PhD
Professor of Human Nutrition
Qatar University, Doha 2713
Tel: +974 4403 7505
Email Reema.tayyem@qu.edu.qa



[Profile Website](#)

Professor Reema Tayyem obtained her BSc in Biochemistry and MSc and PhD in Human Nutrition. Professor Tayyem served as Clinical Nutrition and Dietetics Department chair and assistant dean at the Hashemite University for about 8 years. She joined the Department at 2001 and moved to Nutrition and Food Technology Dept. at the University of Jordan in 2016. She got UNESCO-L'Oreal Fellowship for Young Women in Life Sciences–2005. She performed her postdoc study at UCSD Cancer Center/University of California, San Diego/CA/USA. Professor Tayyem taught many courses in nutrition for undergraduate and postgraduate (MSc and PhD) students. She got research funding from different agencies inside and outside Jordan. Her main research interest is nutrition and dietary patterns associated with chronic diseases including cancer, diabetes, cardiovascular diseases and other related to diet.

Professor Tayyem attended many international, regional and national conferences and workshops. She serves or has served on the Editorial Boards of many Journals. She has published more than 119 papers in peer-reviewed journals. Professor Tayyem is now the Editor in Chief for Pakistan Journal of Nutrition and The President of Jordanian Dietetics Association. Professor Tayyem got many awards and honors. She has been recently honored by Samia Manko Award for distinguished scientist women in 2020 and also honored by Talal Abu-Ghazaleh University College for Innovation for the role as an entrepreneur female in Nutrition (2020). Besides, she got Venus International Foundation Awards, Centre for Women Empowerment, Distinguished Woman in Nutrition–2017. Professor Tayyem also honored for the outstanding Academic achievements at the Hashemite University (2015); Khalil Al-Salem Award for the best Book in Nutrition and Food Technology “Handbook of Healthy Food Preparation and Storage”, Jordan, Amman (2015) and for the outstanding Academic achievements at the Hashemite University (2014).

Dr. Tahra El-Obeid

Associate Professor of Human Nutrition
Qatar University, Doha 2713

Tel:

Email: Tahra.e@qu.edu.qa



[Profile Website](#)

Dr. Tahra ElObeid, Head of the Department of Human Nutrition, College of Health Sciences, Qatar University. She is also a WHO_EMRO Advisor of Food composition and database. Dr.ElObeid has a Master's degree in Human Nutrition and her PhD is in Food Technology from the University of Natural Resources and Applied Life Sciences (BOKU), Vienna Austria. Prior to joining Qatar University, Dr. ElObeid worked at the United Nations World Food Program and several academic institutions. Her work experience includes consultancies and teaching in several institutions at a national and international level; the former Office of the Heir Apparent, Qatar, on nutrition and food safety; the Ministry of Public Health, Qatar, on food safety, the World Food Program, Unicef, the UNDP and Ahmed Bin Hamad Military College. Her main research interests and publications are in the field of in indigenous foods, food safety, food security, functional foods, antioxidant activity, diabetes and micronutrient deficiencies. She has several funded research projects and is a reviewer to several journals in her field.

Prof. Hiba Bawadi

Professor of Human Nutrition

Qatar University, Doha 2713

Tel:

Email: hbawadi@qu.edu



Hiba Bawadi is a professor in human nutrition and dietetics and is the head of clinical training at the college of health sciences. Dr. Bawadi got her PhD from Louisiana State University in 2004 then moved to Jordan University of Science and Technology then joined Qatar University in In 2014. Dr. Bawadi published 70+ peer reviewed articles and 2 book chapters. Dr. Bawadi taught community nutrition, nutritional metabolism and diet therapy and she conducted several community service activities engaging students and in collaboration with local and regional NGOs.

RESEARCH INTEREST: preventive nutrition for non-communicable diseases; Students' learning and civic engagement as one of your research interest

Dr. Layal Karam
Associate Professor
Food Safety Program Coordinator
Qatar University, Doha 2713
Tel: +974 4403 6042
Email: lkaram@qu.edu.qa



[Profile Website](#)

Dr. Layal Karam is an Associate Professor and Food Safety Program Coordinator at Qatar University. She holds a PhD and Post-doc in food safety from the University of Science and Technology of Lille, France. With international and industry experience, she has served as an R&D Manager with USAID and a consultant for UNIDO, supporting the food industries. She is a Lead Instructor for delivering the FDA-standardized curriculum for human food safety. She has been recognized with multiple awards and research grants and has an extensive record of scientific publications and presentations at national and international conferences.

Her professional contributions include serving as a member of the Institute of Food Technologists (IFT) Annual Meeting Scientific Program Advisory Panel, a Class A member of the Global Food Regulatory Science Society (GFoRSS), expert member in the FAO Regional Research Network and Innovation Hub on Food safety, Guest Editor, Review Editor and Reviewer for several international food science journals. She is actively engaged in food safety and public health initiatives, including her roles on scientific and technical committees with the Qatar General Organization for Standardization and the Ministries of Public Health in Lebanon and Qatar.

Dr. Karam's multidisciplinary research focuses on microbiological and chemical risk assessment and the development of innovative food safety solutions, including active antimicrobial food packaging and the use of free and nanoencapsulated essential oils for food preservation and biofilm control. She is also engaged in integrating science with immersive technologies, such as gaming, virtual reality (VR), and generative AI, to deliver innovative and transformative teaching, education, training and workforce development in the Food Sector.

Department of Rehabilitation Science (DRS)

Dr. Saddam Kanaan
Associate Professor
Department of Rehabilitation Sciences
Qatar University, Doha 2713
Tel: +974 4403 6077
Email: saddam@qu.edu.qa



[Profile Website](#)

Dr. Saddam F. Kanaan is an Associate Professor in the Department of Rehabilitation Sciences at Qatar University's College of Health Sciences. He holds a PhD with Honors in Orthopedic Rehabilitation from the University of Kansas Medical Center, USA, and an MSc in Applied Musculoskeletal Physiotherapy from Sheffield Hallam University, UK. With over two decades of international experience spanning academia, clinical practice, and research. Dr. Kanaan is committed to advancing rehabilitation science through evidence-based practice, critical reflection, and the biopsychosocial approach to patient care. His teaching philosophy emphasizes preparing students and clinicians for independent, research-driven professional practice in diverse healthcare settings.

Dr. Kanaan's research program addresses key challenges in musculoskeletal and spine rehabilitation, psychosocial determinants of disability, pregnancy-related musculoskeletal disorders, and the validation of rehabilitation outcome measures. He has authored many peer-reviewed publications in high-impact journals and presented his work at major international conferences. His projects have been supported by competitive research funding, enabling studies in low back pain, women's health, digital rehabilitation, and patient-centered education. By integrating clinical relevance with rigorous methodologies, such as biopsychosocial modeling and outcome-measure development, his work contributes to improved rehabilitation outcomes and the advancement of contemporary physiotherapy education.

Beyond his research, Dr. Kanaan is a dedicated mentor. He has supervised numerous postgraduate students in rehabilitation science, fostering the next generation of scholars and practitioners. His mentorship emphasizes rigorous, interdisciplinary, and clinically applicable research, particularly in musculoskeletal rehabilitation, biopsychosocial assessment, and digital rehabilitation interventions. Current projects include clinical trials and applied studies in spine rehabilitation, women's health, and education-focused innovations in physiotherapy.

Dr. Mohammed Auais
Associate Professor
Department of Rehabilitation Sciences
Qatar University, Doha 2713
Tel: +974 4403 6081
Email: MAuais@qu.edu.qa

Dr. Mohammad Auais is an Associate Professor and a physical therapist with expertise in musculoskeletal and geriatric rehabilitation. Following his PhD in Rehabilitation Science at McGill University, he completed two postdoctoral fellowships at Western University and Queen's University, funded respectively by Mitacs and the Canadian Institutes of Health Research (CIHR). Mohammad's research aims to increase understanding of how modifiable factors interact to influence mobility of older adults, specifically those with hip fractures, and how to integrate this knowledge into rehabilitation.

Dr. Auais has contributed extensively to graduate education through supervision, teaching, and academic leadership. He has served as primary supervisor for students across multiple levels, including four postdoctoral fellows, seven doctoral candidates, one MSc thesis student, and 47 non-thesis Master's students in the Physical Therapy program. These projects have focused on aging, rehabilitation, caregiver support, and musculoskeletal health, with several students receiving competitive awards and scholarships. In addition to supervision, Dr. Auais has taught ten different graduate-level courses, primarily in clinical and research-focused areas

Dr. Hanan Khalil

Professor

Department of Rehabilitation Sciences

Qatar University, Doha 2713

Tel: +974 30087097

Email: hkhalil@qu.edu.qa



[Profile website](#)

Professor Hanan Khalil is a Professor of Neurological Rehabilitation at Qatar University, Department of Rehabilitation Sciences, College of Health Sciences. Her research focuses on neurorehabilitation, with a particular emphasis on the role of exercise in managing motor and non-motor symptoms including sleep, cognition, and mood in neurodegenerative conditions, including Parkinson's disease (PD), multiple sclerosis (MS), and dementia. She is also deeply engaged in the use of technology-enabled rehabilitation, leveraging mobile applications, online platforms, and wearable sensors to promote recovery and enhance functional outcomes in neurological populations. More recently, she has expanded her work into the field of mental health, particularly in developing and evaluating trauma-informed care approaches for individuals who have experienced psychological trauma.

As part of her PhD training at Cardiff University (UK) and throughout the past 13 years, Professor Khalil has led a substantial body of research in these areas. She has secured multiple research grants as a Principal Investigator and has led several clinical studies—both observational and interventional—focused on neurological diseases and mental health. She served as a member of the International Parkinson's Disease and Movement Disorders Society (MDS) Task Force for the Middle East, and she currently serves on the MDS Working Group for the Middle East. Through these roles, she led two major multi-site projects translating and validating standardized PD outcome measures into Arabic and has spearheaded multiple MDS educational initiatives for allied health professionals in neurological rehabilitation.

In recognition of her research excellence and scholarly contributions, Professor Khalil received the L'Oréal-UNESCO for Women in Science Levant Fellowship (2018) and was selected for the TechWomen Emerging Leader Program as well as the MDS LEAP Program for young leaders (2019). She has also been invited to contribute to several WHO advisory committees in the areas of brain health and neurodegeneration.

Professor Nihad A. Almasri
Professor of Physical Therapy
Department of Rehabilitation Sciences
Qatar University, Doha 2713
Tel: +974 4403 6058
Email: nalmasri@qu.edu.qa

Professor Nihad A. Almasri is a Professor of Pediatric Physiotherapy at Qatar University with more than 20 years of academic, clinical, and research experience in childhood-onset disabilities. She holds a PhD in pediatric rehabilitation from the United States and continues to serve as a consultant for World Physiotherapy, while also collaborating with NGOs and WHO-aligned initiatives in rehabilitation education, system development, and capacity building.

Her research program focuses on rehabilitation outcomes, clinical measurement, and registry-based evidence generation for children with disabilities, particularly cerebral palsy and spina bifida. She led the development of CPUP-Jordan, one of the first digital cerebral palsy follow-up and registry platforms in the region, and currently works on harmonizing Common Data Elements (CDEs) and advancing digital registry solutions for Arabic-speaking countries. Her research also includes the cultural adaptation and validation of outcome measures, improving clinical decision-making through structured follow-up systems, and understanding family-centered service delivery processes.

Professor Almasri is actively engaged in systematic reviews, scoping reviews, evidence synthesis, and implementation-focused research that informs policy, training, and practice in pediatric rehabilitation. She has contributed to multi-country studies examining data quality, service accessibility, and contextual needs in low- and middle-income settings, with a strong interest in knowledge translation and research-to-practice pathways.

Alongside her academic work, she has maintained clinical involvement at Sidra Medicine, contributing to the Spina Bifida Multidisciplinary Team (MDT) and Movement Disorders MDT, where she supported assessment, parent education, goal-setting, and coordinated care planning.

Her broader academic interests include competency-based rehabilitation education, implementation science, digital health innovation, and longitudinal outcomes monitoring, with a commitment to strengthening equitable, culturally relevant, and family-centered models of care across the region

Dr. Basem Marie

Associate Professor
Rehabilitation Sciences Department
Qatar University, Doha 2713
Tel: +974 33902562
Email: bmarie@qu.edu.qa



Dr. Basem is an Associate Professor in Speech-language pathology, department of rehabilitation sciences at Qatar University. Dr Basem is a FULBRIGHT scholar who attended and had his degree from University of Colorado in neurogenic language disorders. Dr. Basem's specialty is in aphasia and other adult based communication issues. However, he is involved in research topics in various speech and language pathology areas such as language, language development, and language disorders; fluency disorders; voice disorders; cognitive disorders; and phonological and articulation disorders. In addition to teaching and research, Dr. Basem has a long history of applying therapy, and supervising speech-language pathologists' work in various treatment settings in the field including university clinics, private clinics, school context, and hospital context.

He is a member in many professional bodies in the region and participated in curricular development and professional regulation committees. In addition, he helped in launching SLP programs in devastated countries with high demands to the services of professionals.

Dr. Basem's research focus on finding normative data regarding receptive and expressive aspects of communication, phonological system developments as example. In addition, Dr. Basem focus on the normative data for adults such as voice characteristics, social, and cognitive parameters of communication. Cognition and its role in the success/fail of communication for patients with neurological disability or simply aging normal adults is within the focus of Dr. Basem's research interest.

Dr. Mohammed Safi

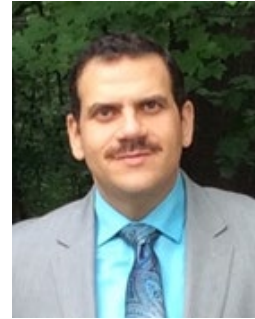
Associate Professor

Department of Rehabilitation Sciences

Qatar University, Doha 2713

Tel: +974 4403 6076

Email: msafi@qu.edu.qa



Dr. Safi completed his doctorate degree at Howard University – USA in Neuroscience and Cognitive, Speech, Language and Swallowing Disorder. His pre-doctoral research training involved swallowing physiology at the Laryngeal section in the National Institutes of Health (NIH), Maryland, USA and Swallowing Physiology Lab at Johns Hopkins Hospital, Maryland, USA.

Dr. Safi is a clinical speech language pathologist specializing in neurogenic communication disorders and dysphagia. Currently, holding an academic appointment as an associate professor (Graduate Faculty) in the College of Health Sciences at Qatar University, Department of Rehabilitation Sciences. Has more than 20 years of clinical experience and 12+ years of academic and research experience. Dr. Safi has supervised several master's thesis and doctoral dissertations in the US and the UAE.

Dr. Safi is a well published researcher in the fields of SLP, rehabilitation and disabilities and an experienced practicing clinician in speech-language pathology. Gained national and international experience in the field of neurorehabilitation of neurogenic speech, language, and swallowing disorders. His main clinical and research interest is in clinical management of individuals with neurogenic speech/language disorders & dysphagia. Specializing in motor speech disorders, adult and geriatric dysphagia, and neuromuscular electrical stimulation applications in the field of speech language pathology. Has multiple published articles in highly ranked international peer reviewed journals. His current research focus is on studying cortical activation as a result of facial neuromuscular electrical stimulation using fNIRS technology. Established a basic neuroscience of education lab to investigate various cortical activations related to speech and language tasks in normal individuals as well as individuals who have special needs.

Dr. Safi's research interests are:

- Neuroscience and Speech and Language Abilities
- Motor Speech Disorders
- Swallowing and Disorders (Dysphagia)
- Neuromuscular Electrical Stimulation and motor speech and Swallowing
- Early identification of autism spectrum disorders
- Disability and Rehabilitation