

DAUP

Department of Architecture and Urban Planning

FALL 2022
VOLUME 7

AWARDS AND
COMPETITIONS

STUDENT
WORK!

A CELEBRATION OF SOME OF THE WORK
OF OUR STUDENTS

VISITS,
EXHIBITIONS
AND
SEMINARS

A POEM FOR
STUDENTS

SKETCH +
DESIGN



DEPARTMENT OF ARCHITECTURE
AND URBAN PLANNING
قسم العمارة والتخطيط العمراني



كلية الهندسة
College of Engineering
QATAR UNIVERSITY



A WELCOME FROM THE HOD

You employ stone, wood and concrete, and with these materials you build houses and palaces. That is construction. Ingenuity is at work. But suddenly you touch my heart, you do me good, I am happy and I say: This is beautiful. That is Architecture. Art enters in.

[Le Corbusier]

I extend to you a warm welcome to the year 2023, as we embark on another exciting semester at our institution. I am pleased to take this opportunity to acknowledge the fantastic

FIFA-2022 experience and extend my heartfelt congratulations to Qatar, the Qatari people, the Arab world, and all those involved in making this historic event a resounding success.

Over the course of an incredible month, fans from all corners of the globe coloured Qatar's newly transformed built environment with its stadiums, hotels, and roads, culminating in one of the most exhilarating World Cup finals in history, followed by the coronation of Argentina and its beloved captain, Lionel Messi. It was truly a magnificent spectacle to behold. As we reflect on the past twenty years of astounding urban-architectural developments in Qatar, we celebrate this country, which has emerged as a global leader in contemporary architecture.

It is on a sad note that we announce the departure of our esteemed professor, Dr Mark M Major. After many years of dedicated service to our institution, Dr Mark has decided to move on to other pursuits. During his time at our university, Dr Mark has played a significant role in shaping the minds of countless architecture students. His passion for the field, his depth of knowledge, and his exceptional teaching skills have earned him the admiration and respect of his colleagues and students alike. Dr Mark's contributions to our institution extend beyond the classroom. He has been a

valued member of several committees and has played an active role in promoting excellence in architecture education. His presence will be sorely missed, and we invite you to join us in expressing our heartfelt gratitude to Dr Mark for his dedication and outstanding service to our institution. We wish him a happy and fulfilling future, knowing that his impact on the world of architecture will continue to be felt for many years to come.

We would like to welcome our new colleagues, Dr Jasim Azhar, Dr Hamed Al Janahi, and Dr Abdulla Al Nuaimi! We are thrilled to have them join our team of dedicated faculty members who are committed to providing exceptional education and research opportunities to our students. Their fresh perspectives, innovative ideas, and wealth of knowledge both in class and along various committees/task forces have already instilled much energy and enthusiasm in us all. **'Benvenuti'**, Profs!

I am also pleased to announce the appointment of the new members of the Curriculum Committee. The Curriculum Committee is a critical body in ensuring that our academic programs are of the highest quality, relevance, and effectiveness. The members of the committee are responsible for reviewing, revising, and developing curricular policies and academic programs. Please join me in welcoming the following members to the Curriculum Committee (Dr Amina Alkandari (Committee Chair), Dr Goze Bayram, Dr Abdulla Al Nuaimi, and Dr Hamed Al-Janahi).

These individuals were selected based on their expertise, experience, and dedication

to our academic programs. I am confident that they will work collaboratively to enhance our curricular offerings and ensure that our students receive a world-class education that prepares them for success in their future careers.

I would like to express my gratitude to the outgoing members of the committee for their hard work and effort to improving our academic programs.

I am delighted to extend an invitation to all our readers and the wider community to join us for the annual Architecture Day to be held in May 2023. We cordially invite you to partake in this momentous occasion and be inspired by the works of our students and future architects. Stay tuned for further details on this event, which promises to be yet another exceptional showcase of talent and creativity.

I end with a few words of encouragement – *Memento Audere Semper* – which is a Latin phrase by an Italian Poet, Gabriele d' Annunzio, meaning: "Remember to dare." I encourage each and every one of you to express yourselves fully and without reservation in your work within this institution. Your ideas, creativity, and enthusiasm are valued and appreciated, and I implore you not to let doubts or hesitation hold you back. It is an honour to share the journey called 'Laurea in Architettura' with you all! Bravissime Studentesse!

"Every teacher once was a student. Every winner once was a loser. Every expert once was a beginner. But all of them have crossed the bridge called 'Learning" - Unknown



A NOTE FROM THE CHIEF EDITOR

“Architecture is the very mirror of life. You only have to cast your eyes on buildings to feel the presence of the past, the spirit of a place; they are the reflection of society.”

[I. M. Pei]

W

elcome, all, to a new academic year that will carry many exciting moments while Qatar hosts the first World Cup in the region. FIFA World Cup 2022!

It is with profound pleasure and anticipation that of celebrating the launch of this edition of Al-Imara. On behalf of the Al-Imara Editorial team, I would like to extend to you a very warm welcome to the readership of Al-Imara. I want to thank all the reviewers, authors, and volunteers who contributed to the successful delivery of this edition of Al-Imara.

This edition of Al-Imara is themed around the success of the student body. In this issue, we explore our student's work, as students are at the future forefront of shaping the built environment around us. We have curated a collection of articles that cover a wide range of topics relevant to architecture students.

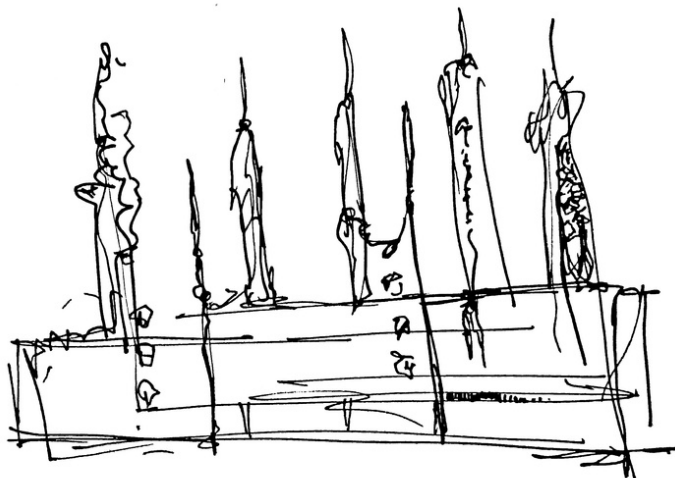
From the latest trends in sustainable design to tips on creating winning portfolios, we hope you find this newsletter informative and inspiring. We also encourage our students and faculty members to stay engaged with the broader architecture community, whether it is through attending conferences, networking events, or participating in design competitions. The opportunities to learn and grow as an architect are endless, and we hope this newsletter serves as inspiration for your continued exploration.

I am delighted to leave a copy of this edition with you, review it, read it, and enjoy it; we always want to deliver the best!

Best regards,

Dr. Amina Y. Al-Kandari

Editor-in-chief, Architecture Students Newsletter



Dr Amina's Mind on 23 October 2022



A NOTE FROM THE EDITOR

"The magic of the present moment that is warily stored in the granary of our memory may pop up at any time and usher us along the winding paths of our life, and light up the dead points in the dim curves of our journey.

[("Voices of the sea") –"
— Erik Pevernagie]

Urban planning and architecture are disciplines that require both creativity and technical skill. While these qualities are important for any professional in the field, they are especially critical for students in a department such as ours. Students bring a unique perspective to the table, one that is informed by their experiences, interests, and aspirations. In this newsletter, we celebrate the importance of students in our department and the ways in which they contribute to the discipline.

Students bring fresh ideas and perspectives to the field. As they learn about the history and theory of the built environment, they are able to engage with this knowledge in new and exciting ways. By exploring the ways in which architecture intersects with other fields, such as engineering, sustainability and design, students

are able to push the boundaries of what is possible in the built environment. This creativity and innovation are essential for the continued evolution of the field.

Academia has a certain magic that is hard to describe. It is a world of ideas, of endless curiosity, and of passionate pursuit of knowledge. The magic of academia lies in the opportunity it provides to explore the unknown, to challenge existing theories and concepts, and to create new knowledge that can change the world. It is a space where people from diverse backgrounds come together to share their unique perspectives and experiences, and to engage in meaningful dialogue and debate. In academia, ideas are not just a means to an end; they are the driving force behind everything we do.

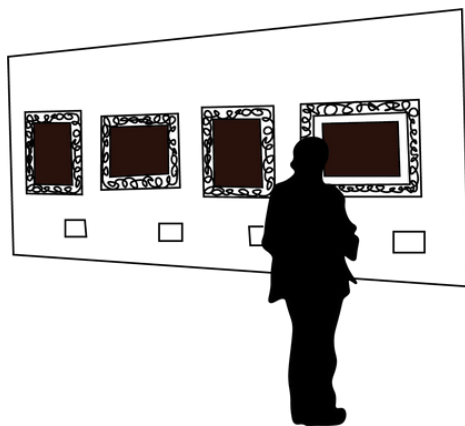
It is our wish for you, our students, that your academic years are especially memorable - and valuable: that you take away an experience that will serve you throughout your lives.

It was our aim that this newsletter provides you with many magical memories to "pop up at any time and usher [you] along the winding paths of [your] life". Enjoy!

Warm regards,

Dr. Tarryn NK Paquet

Principal author, copywriter and editor, Architecture Students Newsletter



DAUP student admiring the Orientalism exhibition during the Lusail Museum tour

CONTENTS

VOLUME 7

A CELEBRATION OF STUDENT WORK

FROM THE...

A Welcome from the HOD of DAUP
Editor's note

AWARDS AND COMPETITIONS

- WASA (World Architecture Student's Award) - AI KASS TV Broadcasting Station and Streak Pavilion by Loulyana Al Chalabi
- The Innovation Exhibition - Smart Device for Protection in Confined Spaces by Sara Al Baker
- Visualisation Challenge Award Entry - NAMSHI by Tagwa Osman and Khalida Lifam
- Ziena Competition - Al Rakla Ela'ab by Sara Al Baker, Hanan Al Emadi, Aisha Al Khanji, Hawea Moosawi, Zahra Al Najjar and Marwa Elaradi

VISITS, EXHIBITIONS AND SEMINARS

- Olivetti Universe Exhibition
- Lusail Museum
- Climate, Culture, Change by Dr Markus Jatsch
- Art Mill and Najada Exhibitions Opening

STUDENT WORK

- Olivetti Universe Exhibition
- Lusail Museum
- Climate, Culture, Change by Dr Markus Jatsch
- Art Mill and Najada Exhibitions Opening

UPCOMING EVENTS

- Architecture Day 2023
- CIC Conference
- Art Mill Tours (DAUP and ADS III)
- Msheireb/Italian Embassy Exhibition
- DAUP Awards Ceremony



Nada Nabil



Maryam Azan



Gharam Al Mannai
FALL 2022 VOLUME 7 PAGE 4

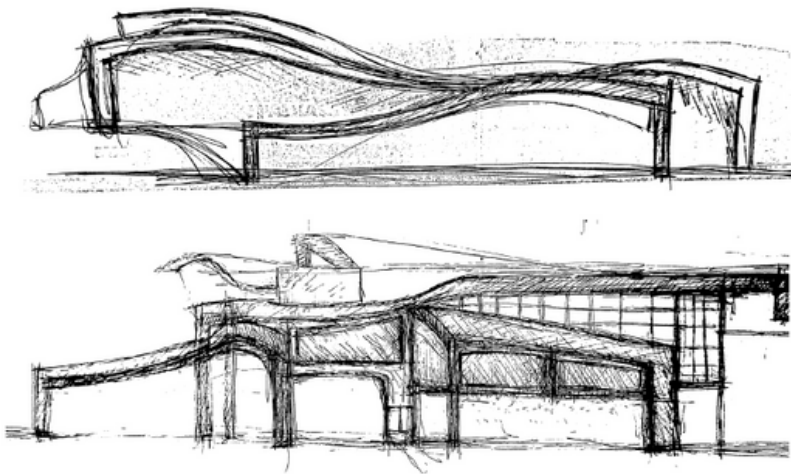
WORLD ARCHITECTURE STUDENT'S AWARD (WASA)

by Loulyana Al Chalabi

WASA is a Japanese international competition, short for World Architecture Student Awards, it is a competition where there are 2 rounds. The first round: best 100 projects are selected with the help of AI that compares the student projects to other projects and architects to assess different levels, concept, site, context, comprehension, graphics, etc. I participated in 4 studio projects, 2 have been selected alhamdulillah, and the total participating projects are 664 projects. The ranking of the projects was as follows for ROUND 1:



ALKASS - CONCEPTUAL SKETCHES

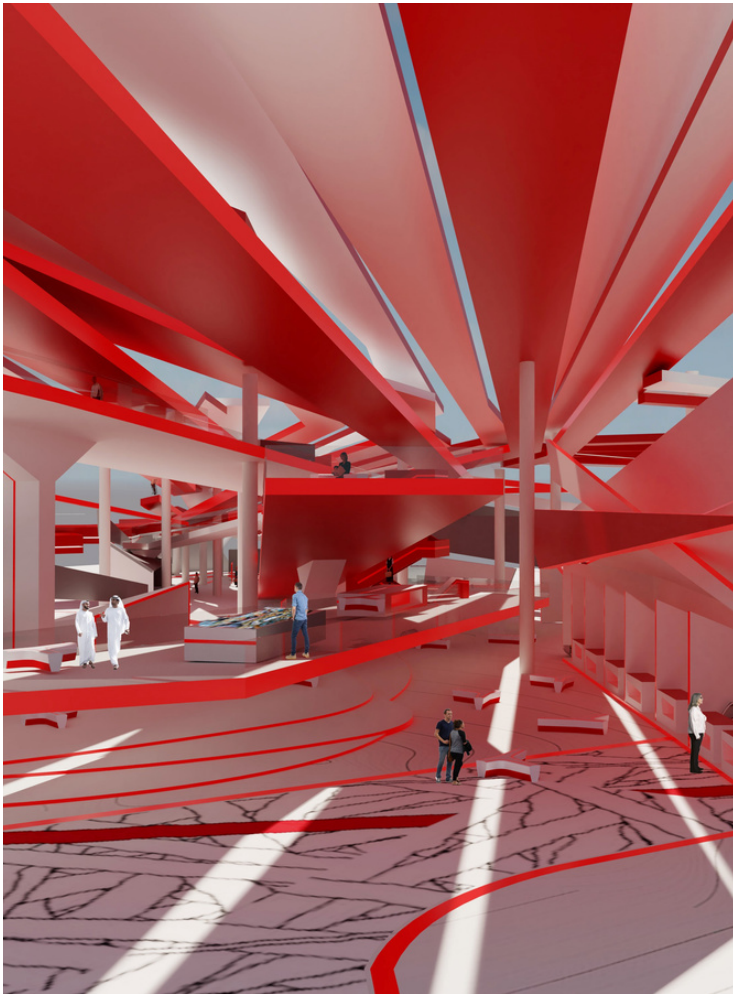


- 4k TV Sports Channel Headquarters won the "Genius Solution award" and entered the A League.
- Streak Pavilions won the "Best Selection Award" and entered the E League.

I was sent a detailed excel file with rankings regarding different criteria. Round 2 was a voting round, where the best 100 projects were exhibited for voting. The competition allowed student to see other students' work around the world and to know the strengths and weaknesses of my projects in the detailed excel file. Winners will receive certificates and publications.



ALKASS - EYE LEVEL VIEW



KIOSKS AND VIBRANCY OF COLOR

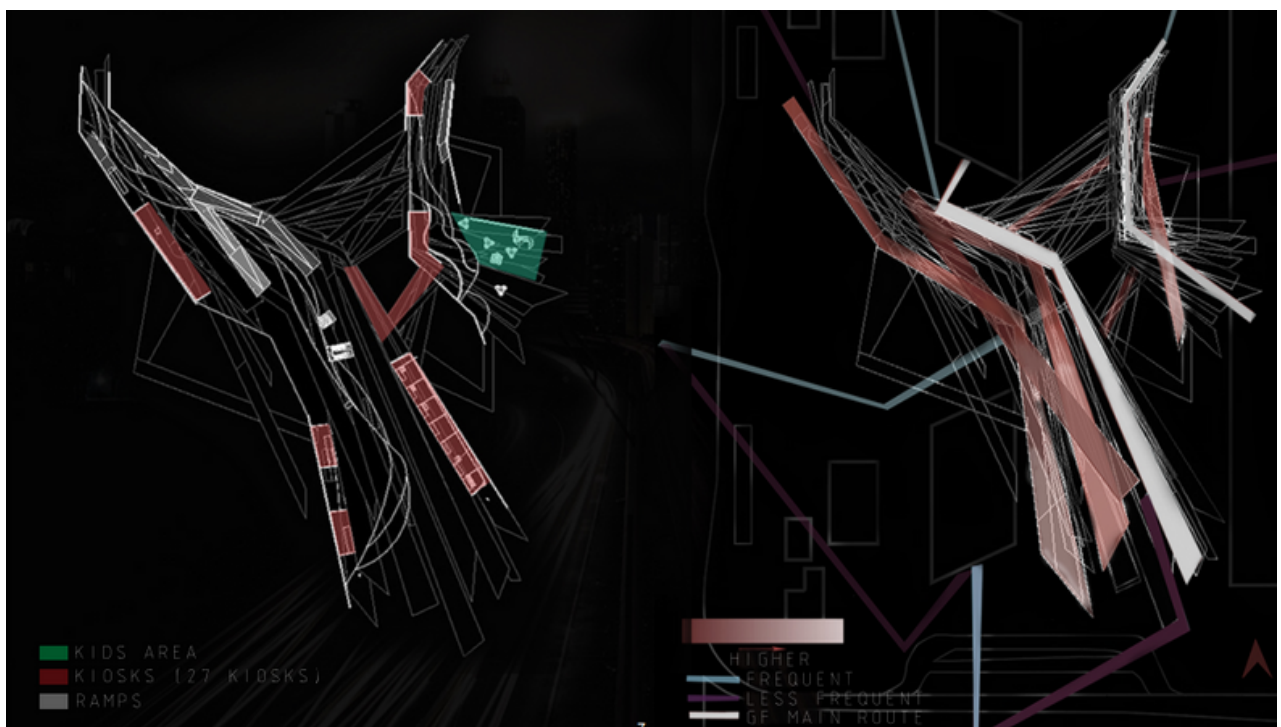
Streak Pavilion

A PUBLIC SPACE THAT EXHIBITS THE SOUL OF THE CITY

Walking while being accompanied with flying cantilevers that pushes you forward. A surreal play of shadows and illusions. The visitor feels part of the architecture.



INTERIOR VIEW



FLOOR PLAN AND CIRCULATION



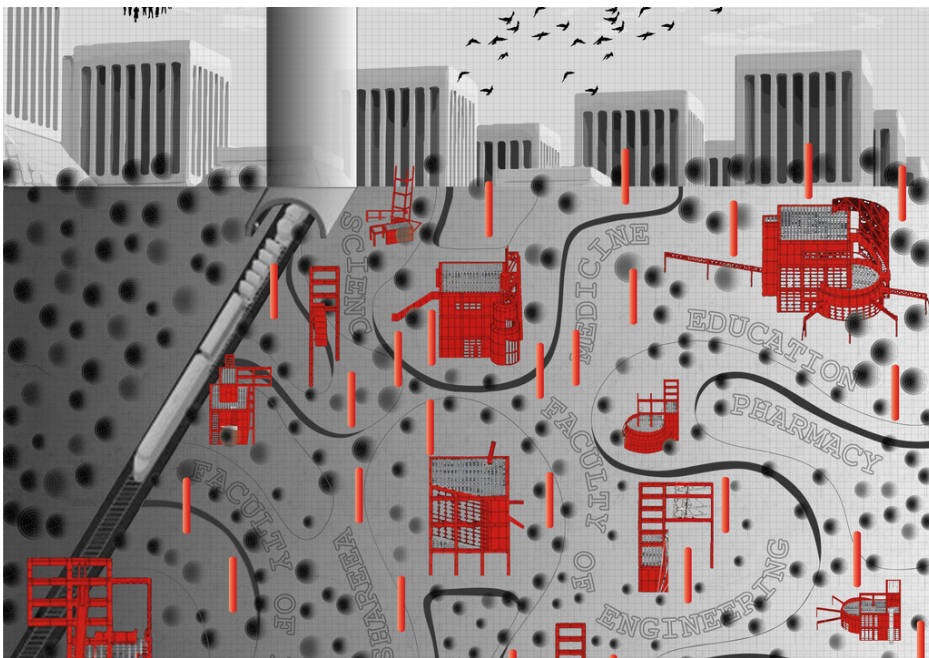
THE INNOVATION EXHIBITION SMART DEVICE FOR PROTECTION IN CONFINED SPACES

BY SARA ALBAKER

This invention project aims to develop a system that is easily integrated into cars' setup in order to eliminate and reduce the potential of having incidents of children trapped in confined spaces such as cars and hence saves lives and health. The system that is developed for this approach is composed of thermal camera for complete mapping of the confined space. The Thermal map that is produced is utilized to identify any human pattern or living being. In fact, this programmed system, works upon any detection of human patterns. Consecutively, an alarm is activated, ventilation system is automatically run, alert messages are sent consecutively to the responsible person over the period of the next few minutes then, finally followed by a message to the emergency service center if no response or action was detected.

NAMSHI

Visualisation Challenge Award
by Tagwa Osman and Khalida Lifam

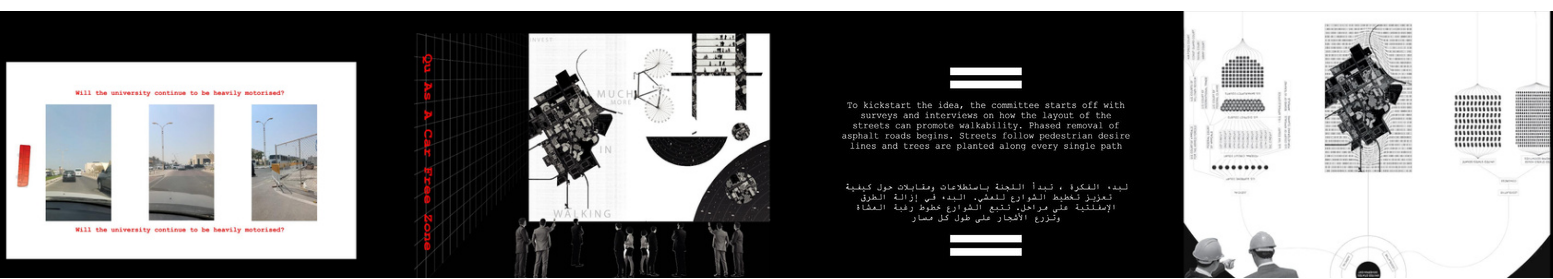


A

n animated video of illustrated images based on an original idea by Tagwa Osman. Assisted by Khalida Lifam Marthya. This entry is

a reimagining of the current architectural state of Qatar University campus. From a heavily car-dependent layout, 'Namshi' narrates the transformation of the University campus to a car free zone and its rise to becoming a landmark through the eyes of Maryam and her visions. Initially born out of the frustration of the authors on the poor walkability within the campus, and its delirious

effect on student health and engagement, the video describes the evolution and implementation of a novel idea that can change the urban scene of the university. The major issue with the university campus is the over reliance on private vehicles, lack of shaded pathways, disconnected buildings and an overall lack of diverse interest areas that can attract and engage users. Adding to the challenge is the climate extremes in the summer that can make walking outside a strenuous activity. Through the video, a new way of imagining the University is proposed. Instead of relying on cars and roads that add to the overall heat emission and urban heat island (UHI) effect, asphalt roads are completely removed. Desire lines, or the natural pedestrian trails that form out of excess movement from one building to the other, become the major pathways. These pathways are covered with native shady trees and canopies.



Zeenah Competition

Al Rakla Ela'ab



SUPERVISED BY
DR. AMINA AL-KANDARI
DR. GOZE BAYRAM
ALJAZI AL-BANAI
BASHAYER AL-NAIMI

DESIGNED BY
SARA AL-BAKER
HANAN AL-EMADI
AISHA AL-KHANJI
HAWRA MOOSAWI
ZAHRA AL-NAJAR
MARWA ELARADII

Zeenah Competition

Sara Al-Baker,
Hanan Al-Emadi,
Aisha Al-Khanji
Hawra Moosawi
Zahra Al-Najar
Marwa Elaradii



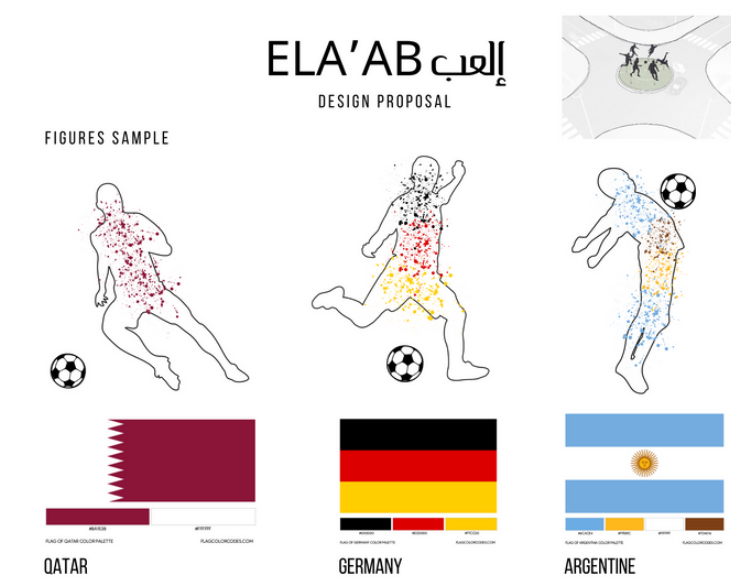
The concept of ALRAKA (الركلة), is derived from the gradual movement of a football from the player to its destination. As it represents the energy, health, and power of the 2022 FIFA. Linked with the concept of ELA'AB (العب), which is derived from football, communicating a role of unity between the countries participating in the FIFA WORLD CUP QATAR 2022. In this project, the figures are represented through the abstract of the actual flag colors on the players, while the footballs are despite the diversity of languages, cultures, and backgrounds.

The project celebrates FIFA WORLD CUP 2022, and it's an excellent way to honor the community's love and passion for football, as it showcases the unique ways in which the community experiences football. The Art implemented adds value to the community in numerous ways, as it celebrates local and international culture, brings people together, beautifies public spaces, and educates and inspires.

The concept of the Art pieces implemented is made in a way, that we look at football as a good analogy for our lives because it shares many characteristics with our daily lives, including our families, the society in which we live, and the academic and professional environments.

Therefore, the Art pieces gave an identity to the space while also giving the students and employees the sense of the existence of an essential event related to the World Cup.







Olivetti Universe Exhibition



olivetti is an Italian company that was founded in 1908 and initially manufactured typewriters. Over time, the company expanded its product line to include calculators, computers, and other office equipment. Olivetti is known for its innovative designs and contributions to the field of industrial design. The Olivetti Universe Exhibition in Doha is a showcase of the iconic Italian brand Olivetti, which revolutionized the world of computing and office equipment. The exhibition features a wide range of artifacts and memorabilia from the company's rich history, including early typewriters, calculators, computers, and other office equipment. Our students were given the opportunity to explore the evolution of the company's technology, from the early days of mechanical typewriters to the cutting-edge computer systems of today. The exhibition also highlights the company's commitment to design and innovation, showcasing the sleek and modern designs of Olivetti's products throughout the years.

AN ODE TO THE ARCHITECTURE STUDENT

Oh, the life of an architecture student,
It's a rollercoaster ride, with every moment prudent,
From all-nighters to endless critiques,
We push through it all, with bags under our eyes and coffee as
our only techniques.

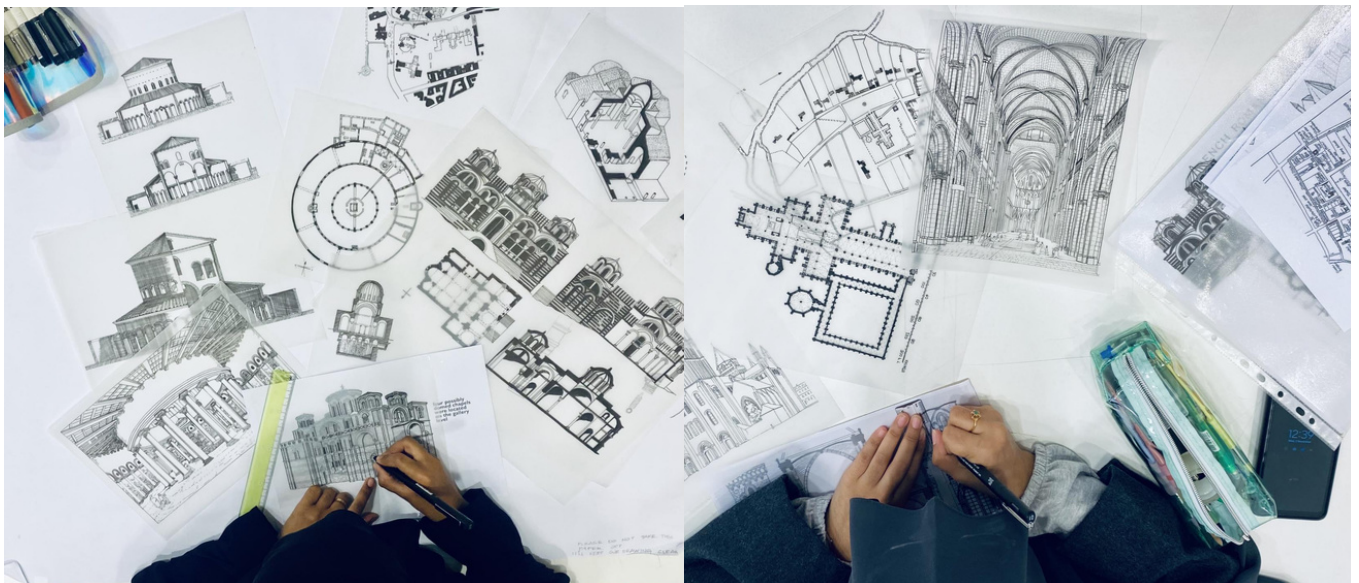
We draw lines and shapes with such finesse,
And then watch as the professor tears it apart, oh the stress!
But we take it in stride, and start anew,
For we know that one day, we'll build something grand and true.

We spend hours in the studio, our second home,
And when we're not there, we're on the phone,
Discussing projects with our classmates and friends,
It never ends.

But we love what we do, the creativity and challenge,
And the satisfaction that comes with every inch of progress, no
matter how small the mileage.

So here's to us, the architecture students of the land,
May our designs be grand, and our coffee always at hand.

WITH FOND REGARDS, CHAT GPT



LUSAIL MUSEUM



T

he Orientalism exhibition in Doha is a showcase of artworks and artifacts that explore the Western fascination with the Middle East and North Africa during the 19th and early 20th centuries. The exhibition features pieces from the Arab Museum of Modern Art's permanent collection

and loans from international collections. The exhibition includes a range of media, including painting, sculpture, photography, and decorative arts. Highlights include works by renowned Orientalist painters such as Jean-Léon Gérôme, Eugène Delacroix, and John Frederick Lewis, as well as lesser-known artists who also contributed to the genre.

In addition to showcasing the art and artifacts of the Orientalist movement, the exhibition also explores the complex cultural and historical contexts that shaped Western perceptions of the Middle East and North Africa during this period.



Students came away with a deeper understanding of how these artworks both reflected and perpetuated stereotypes and misconceptions about the region, and how they continue to shape our understanding of the Middle East and North Africa today. In addition to the exhibits, the students had the opportunity to engage in a guided tour and talk by a representative from the acclaimed Swiss architectural firm, Hertzog & de Meuron.



The talk provided valuable insights into the significance of the architecture on display and the broader impact it has had on society. The students were able to ask questions and gain a deeper understanding of the design process undertaken by Hertzog and de Meuron for the design of the future Lusail Museum. Overall, it was a fascinating and memorable experience.



CLIMATE, CULTURE, CAPITAL AND CHANGE

BY DR. MARKUS JATSCH

SENIOR PARTNER, MARTHA SCHWARTZ PARTNERS

T

his lecture set out various methods in which the landscape can be designed as a platform for creative thinking and climate solutions in the work of Martha Schwartz Partners. One of Martha Swartz's first projects in the Qatar region was the Doha Corniche Masterplan in 2003. During his lecture, Dr Jatsch expanded on examples developed by Martha Schwartz Partners with the express purpose of targeting climate change. He looked at how the different forms of capital within an area or region can be effectively and fully utilised in this endeavour, and how change can be brought about to ensure a sustainable future for all.

PHOTOGRAPH SUPPLIED BY MARTHA SWARTZ PARTNERS



NAJADA EXHIBITION

T

he Najada Exhibition is a celebration of the rich history and heritage of Qatar. The exhibition features a range of displays and interactive exhibits that showcase the country's traditions, customs, and culture. We were given the opportunity to explore various aspects of Qatari life, including traditional clothing, food, music, dance, and art. The exhibits also delved into the country's history, highlighting important events and milestones that have shaped Qatar into the modern nation it is today. One of the highlights of the Najada Exhibition is the opportunity to meet and interact with Qatari artisans, craftsmen, and cultural experts. Visitors can learn

about traditional handicrafts such as weaving, embroidery, and pottery, and even try their hand at some of these techniques themselves. The Najada Exhibition also includes a section of traditional architectural landscaping which ties in with the Art Mill Museum Exhibition. Please be on the lookout for future tours and events organised in conjunction with the Art Mill Museum.



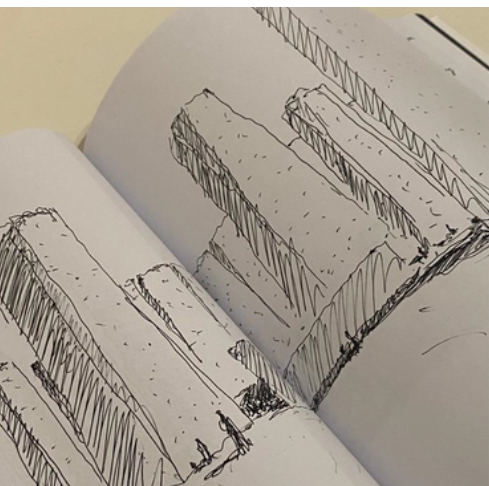
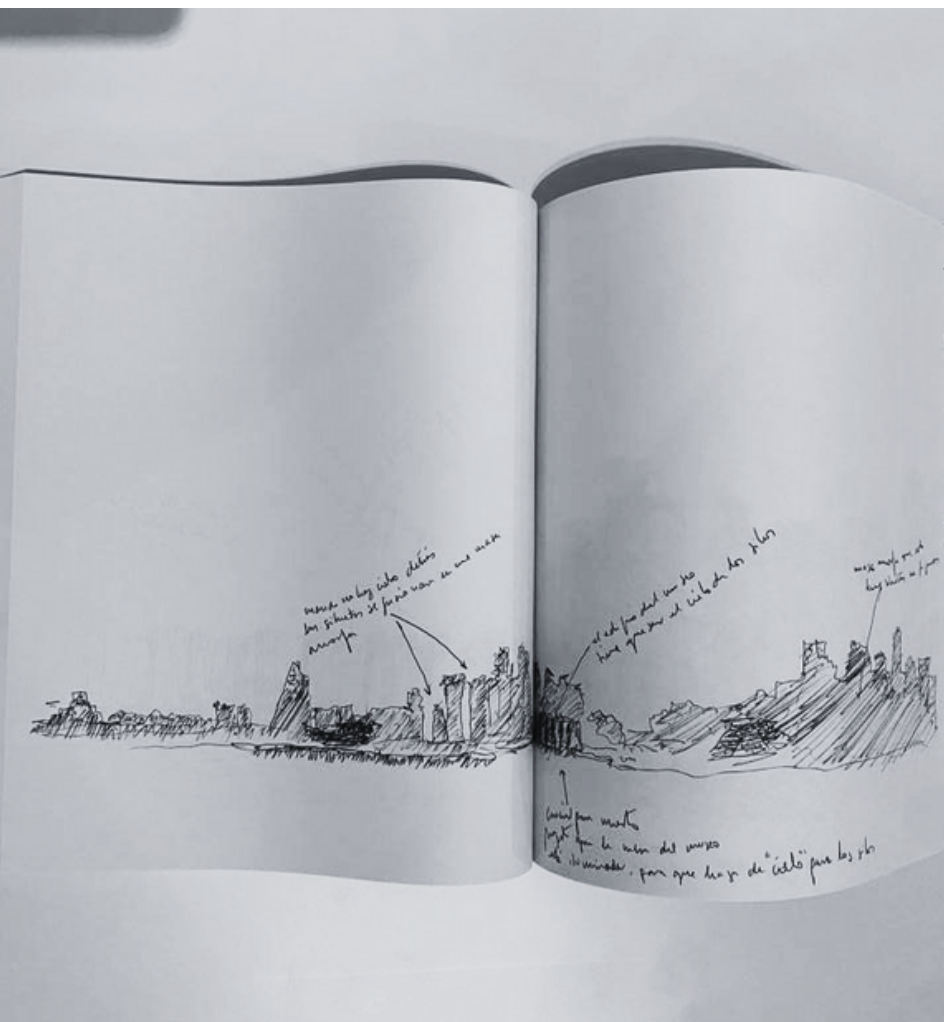
PHOTOS SUPPLIED BY ART MILL MUSEUM

ART MILL EXHIBITION

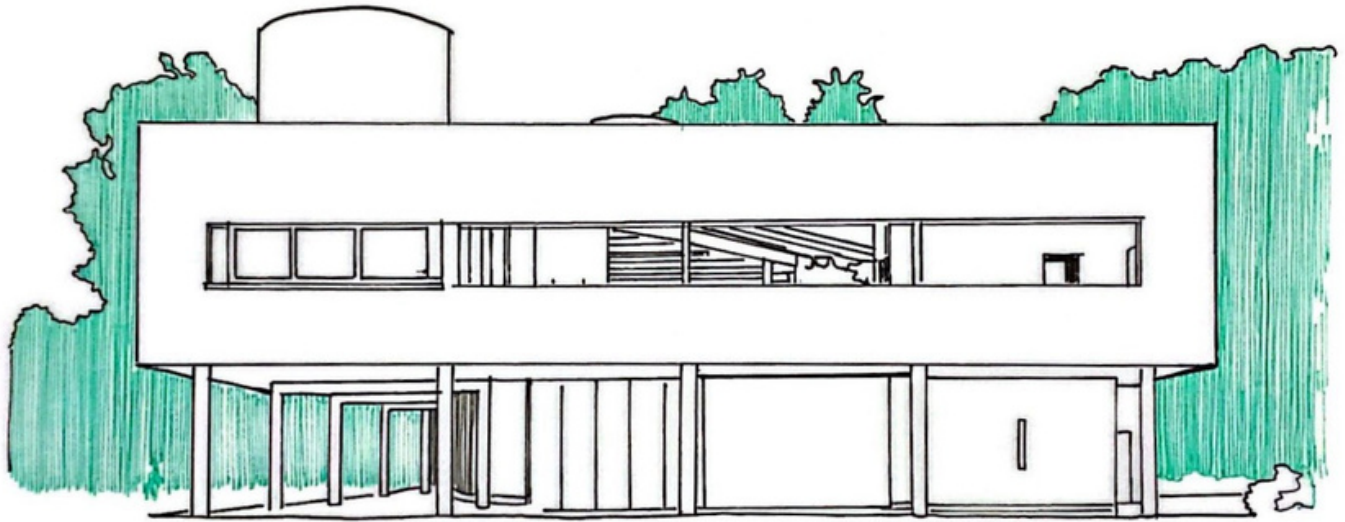
T

he Art Mill Exhibition showcases the conceptual design of the future Art Mill Museum which is a redesign of the existing Flour Mill. The new museum will be housed in a landmark building designed by Alejandro Aravena of ELEMENTAL. The building will be located on the site of an industrial flour mill and will include a creative village and garden designed by VOGT Landscape Architects. The museum will be situated next to the restored old port and international ferry terminal, and will be connected to the existing Museum of Islamic Art and National Museum of Qatar by the Cultural District promenade, designed by James Corner.

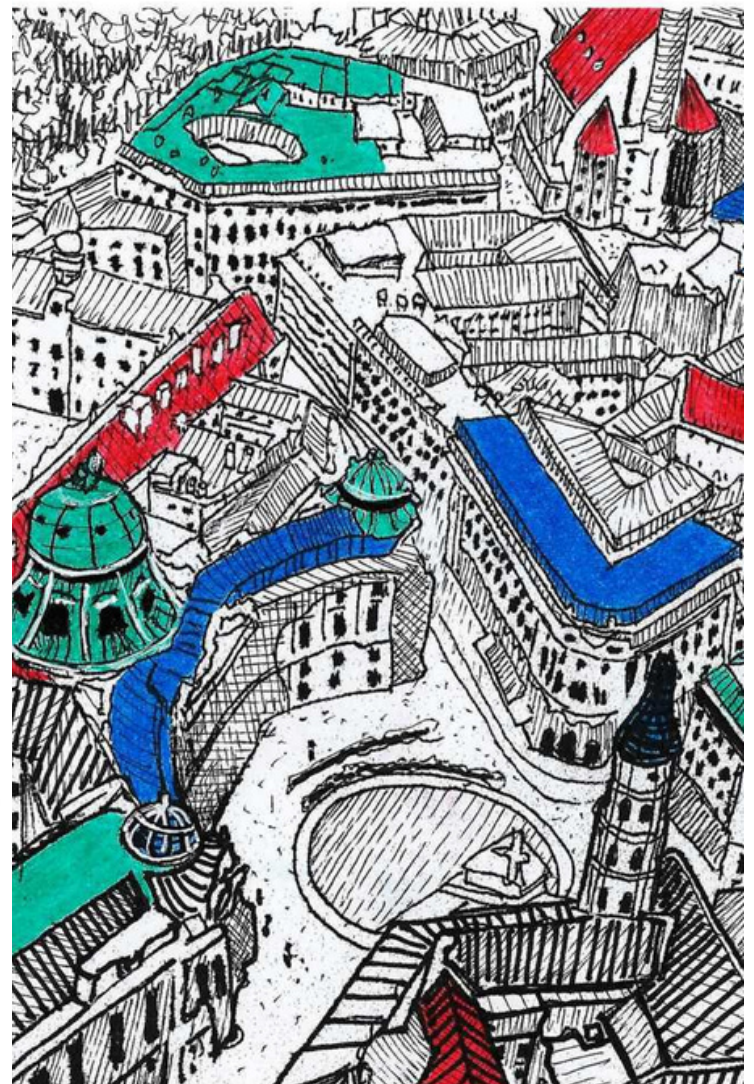
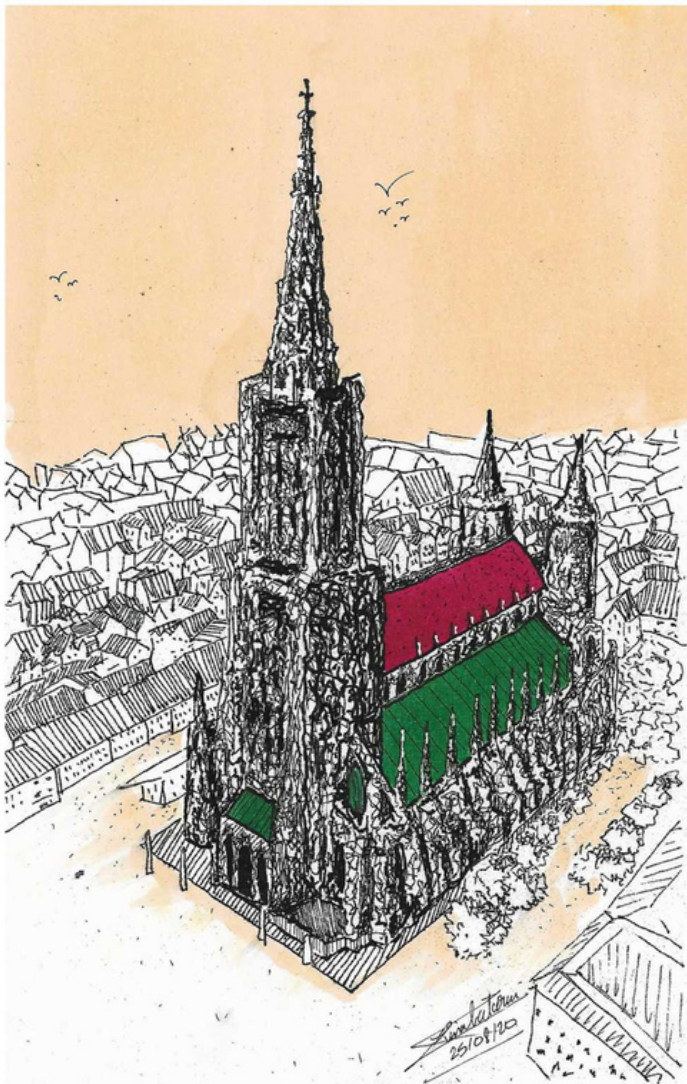




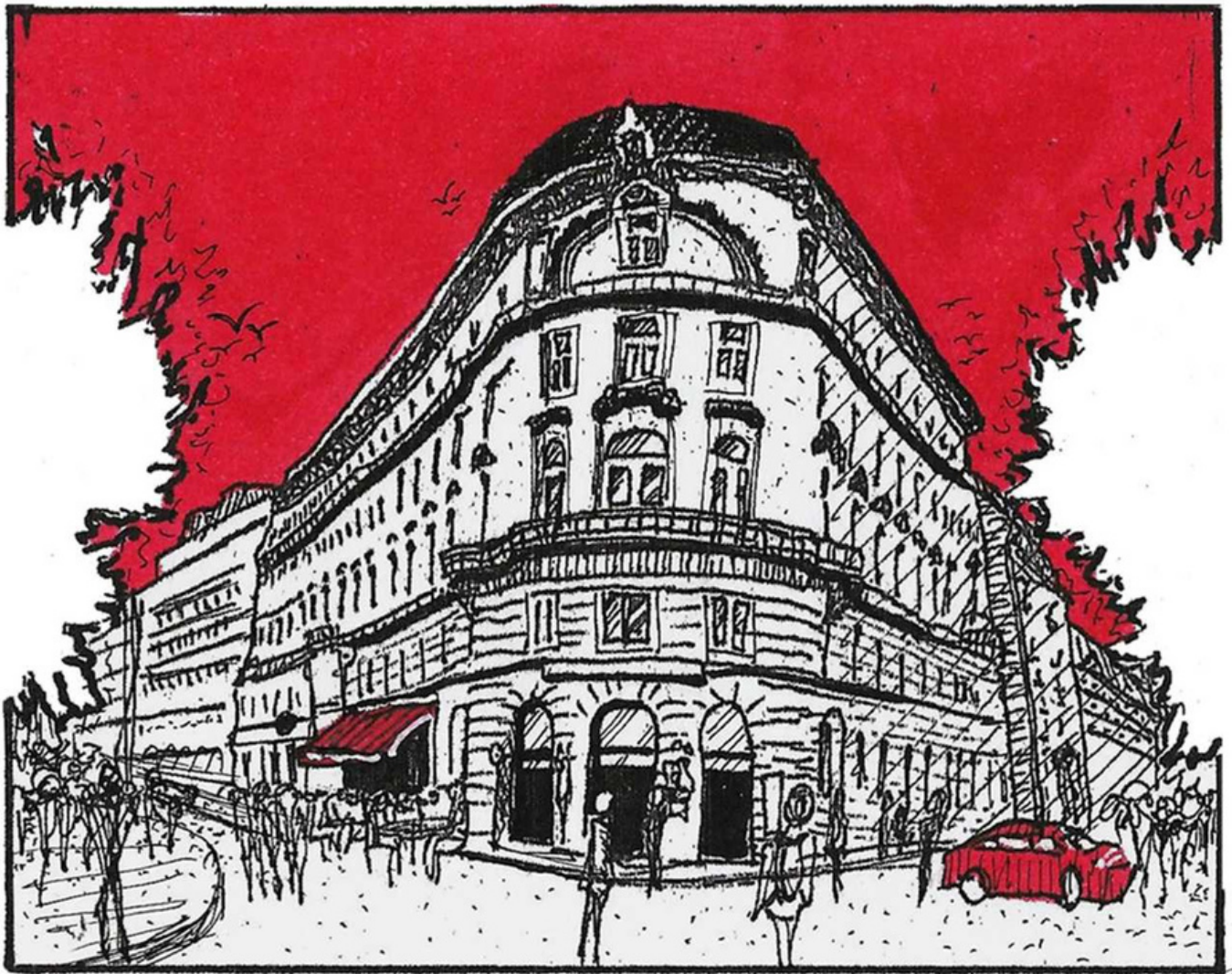
STUDENT SKETCHES



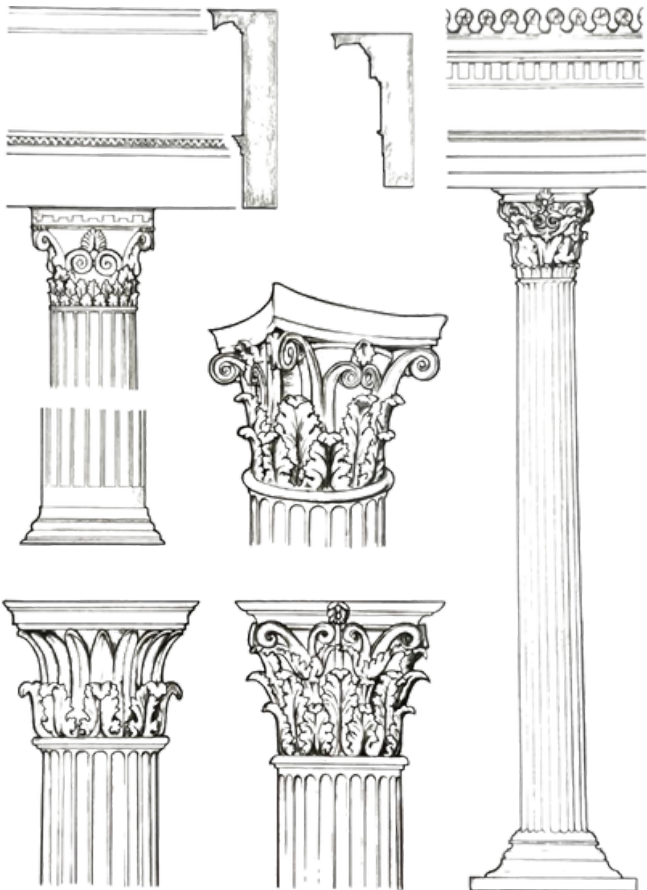
Liya Mariyam



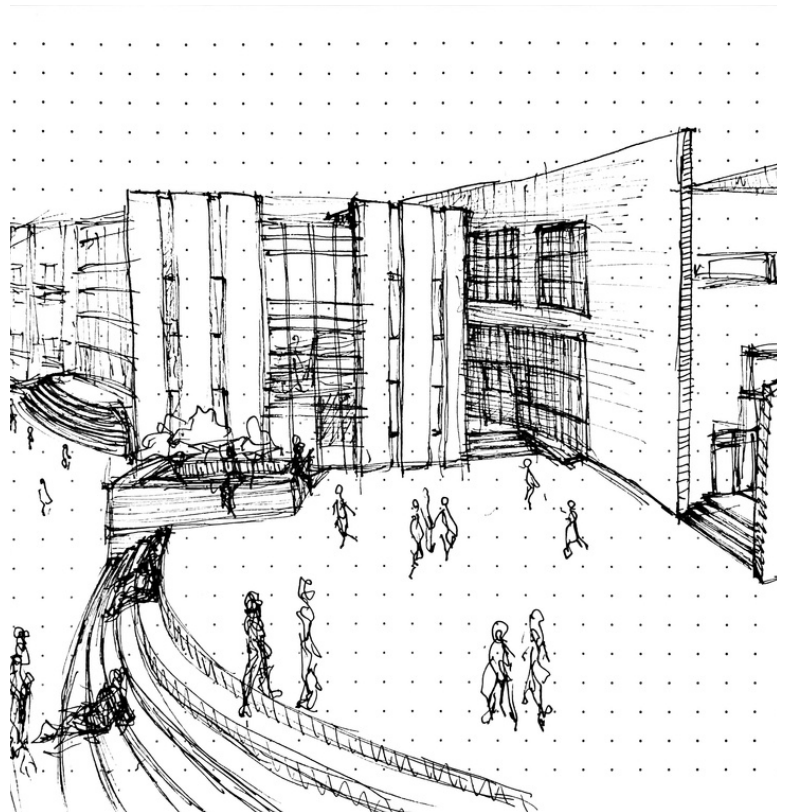
Luna Batarni



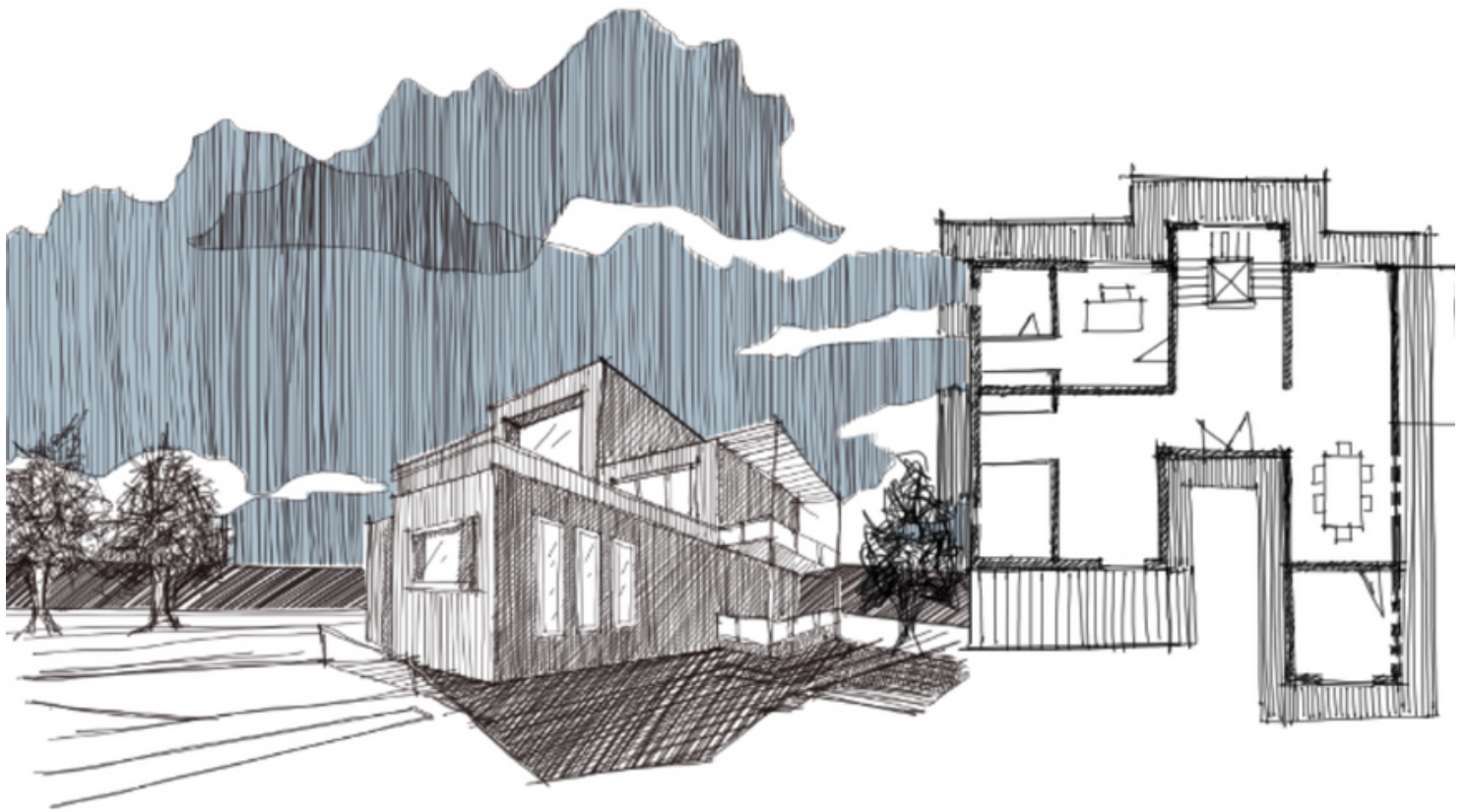
Luna Batarni



Sara Alyafei



Aisha Jamali

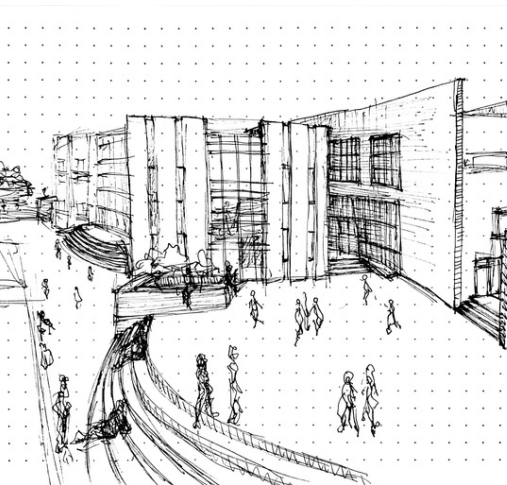
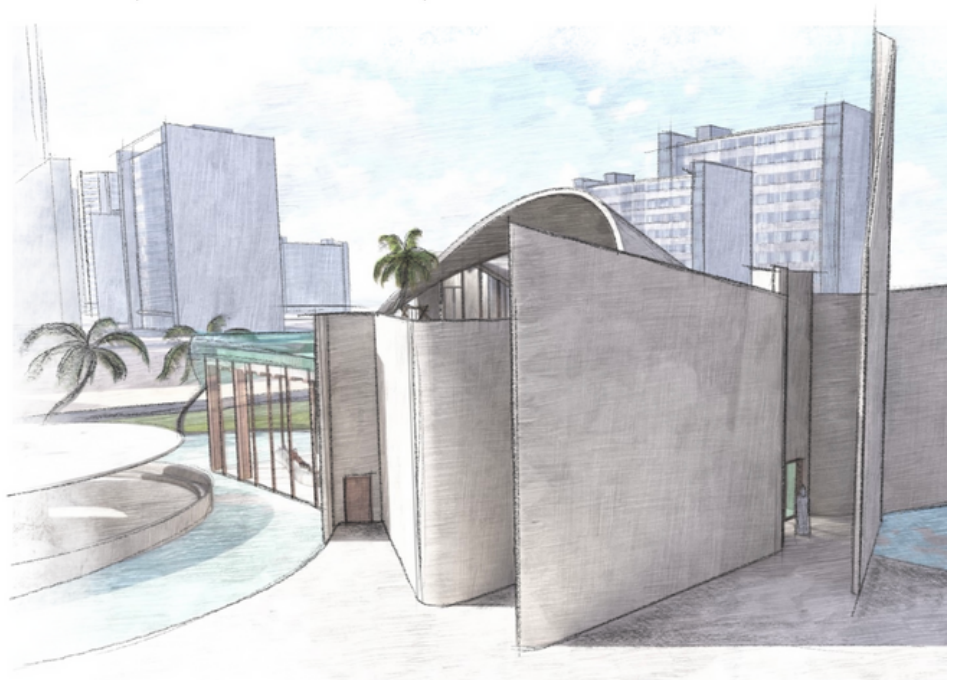


Maryam Azan



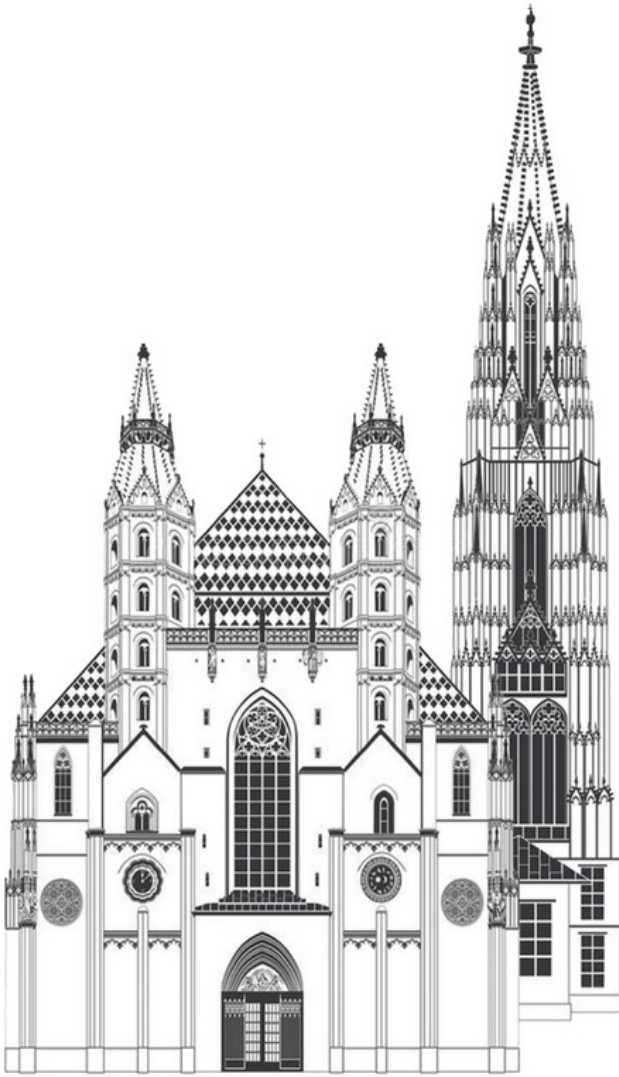
Zahraa AlNajar

Concept & Development

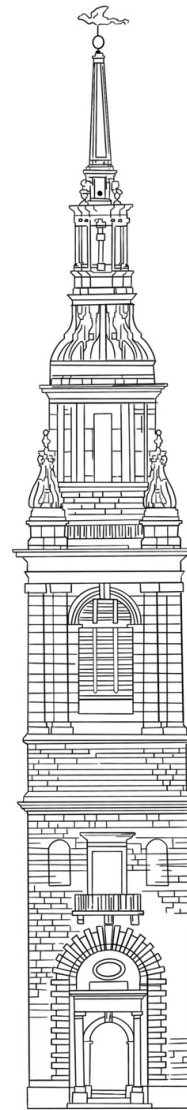


Aisha Jamali

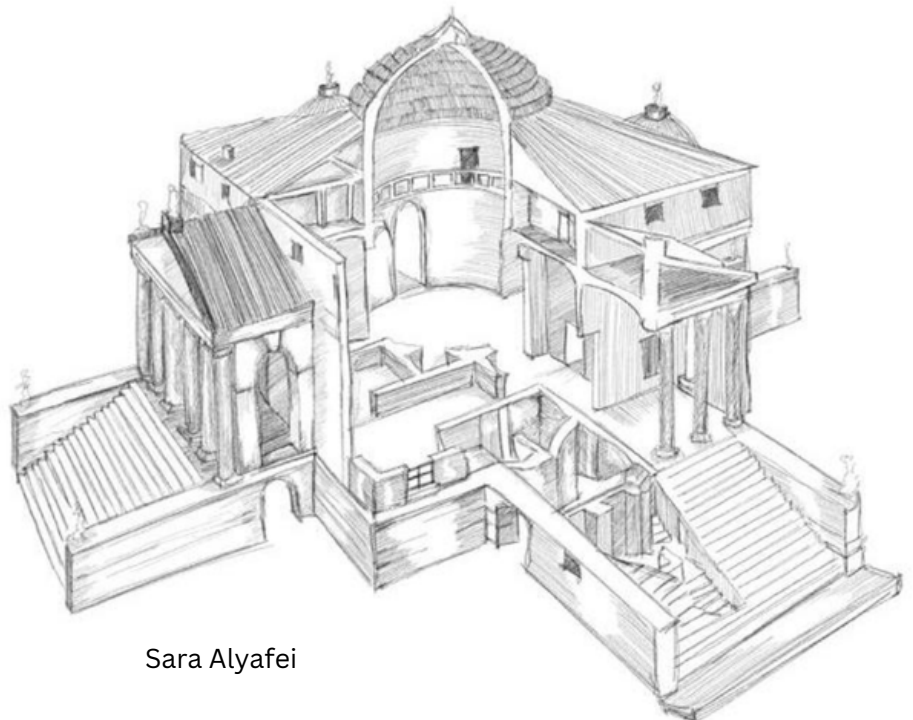
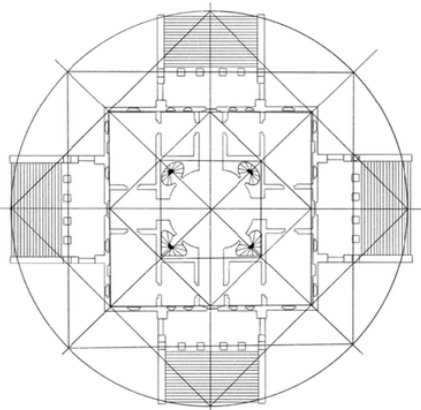
Maryam Azan



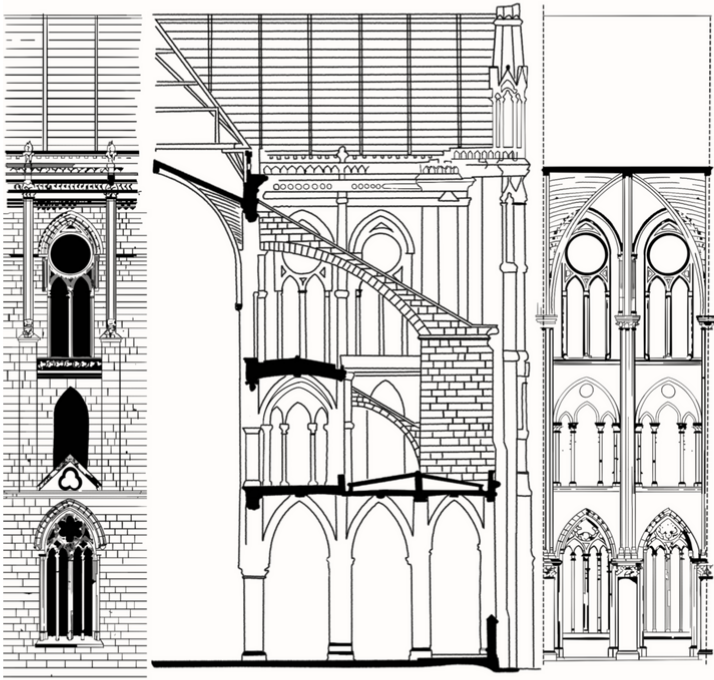
Jawaher Al-Obaidli



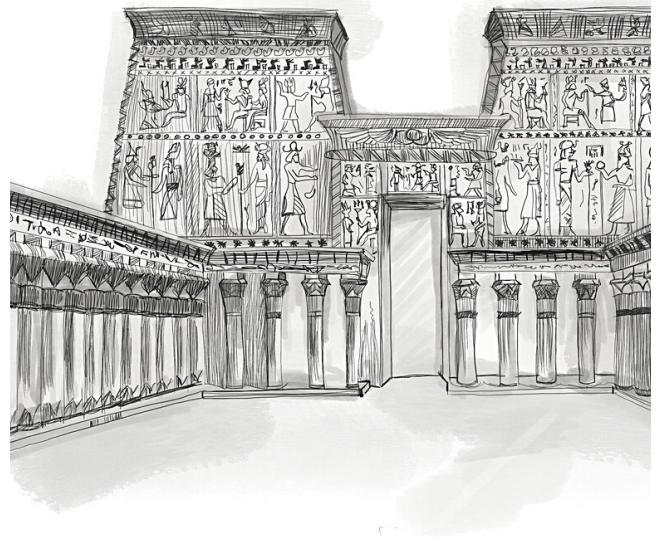
Yara Abdelsalam



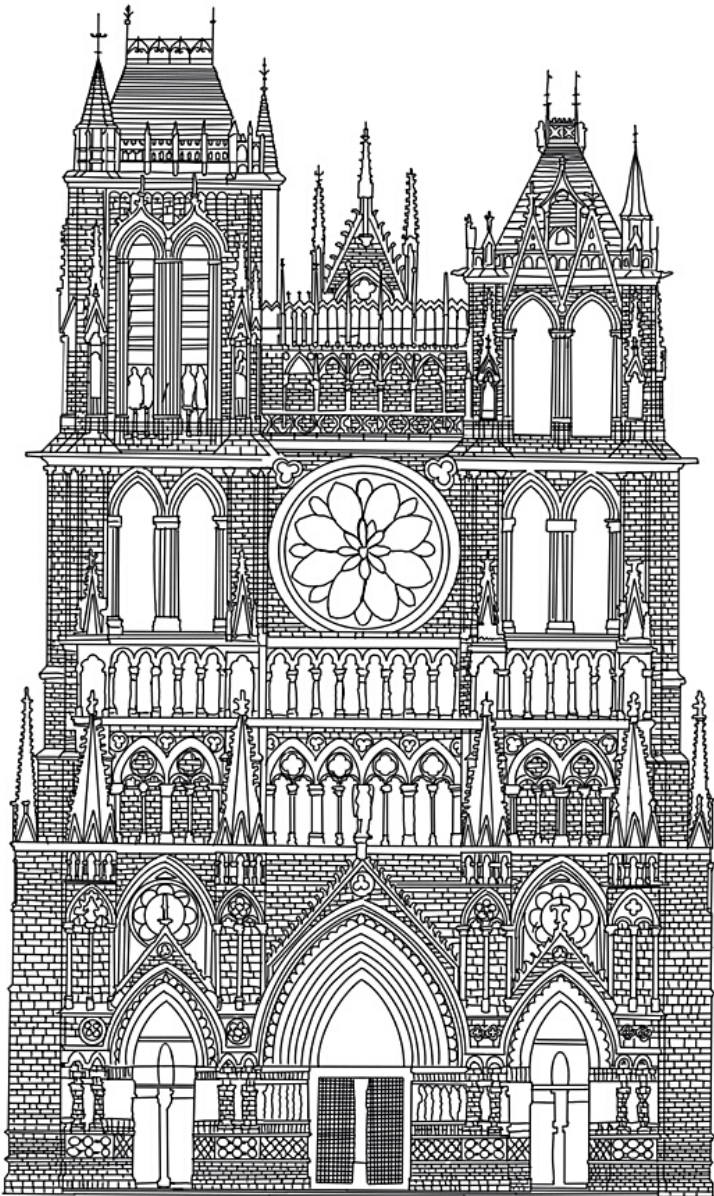
Sara Alyafei



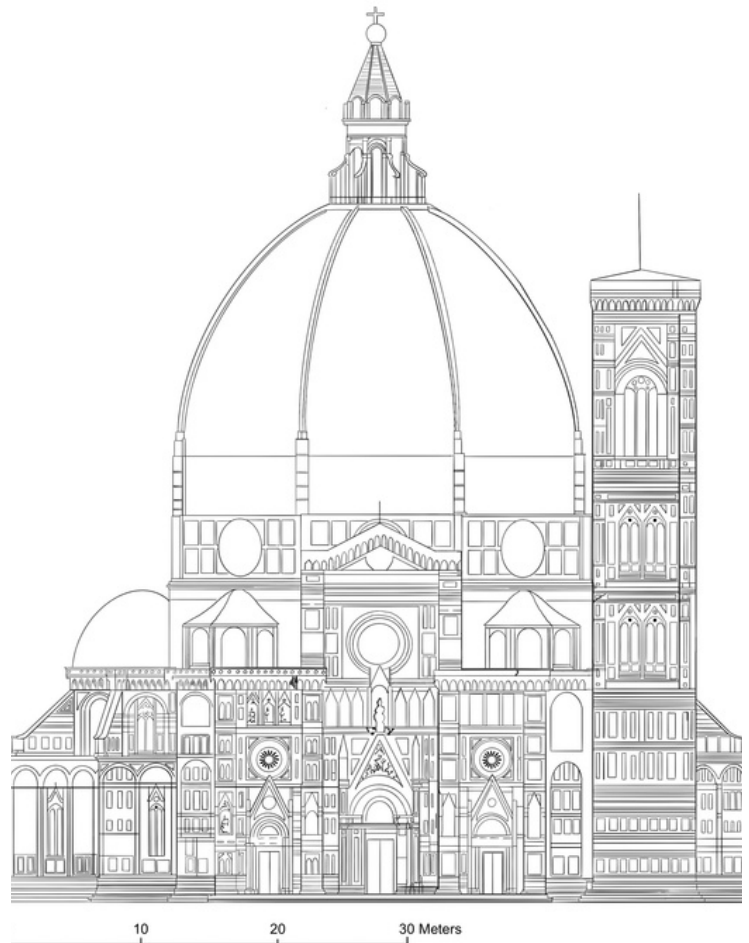
Haya AlHajri



Fajar Al Ziyarah



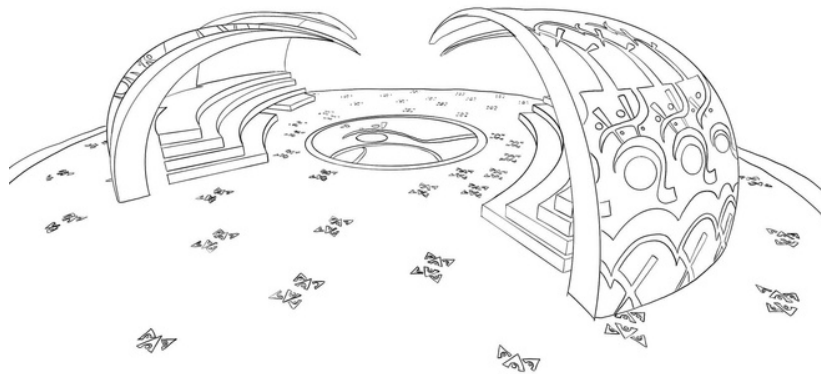
Aldana Al-Amadi



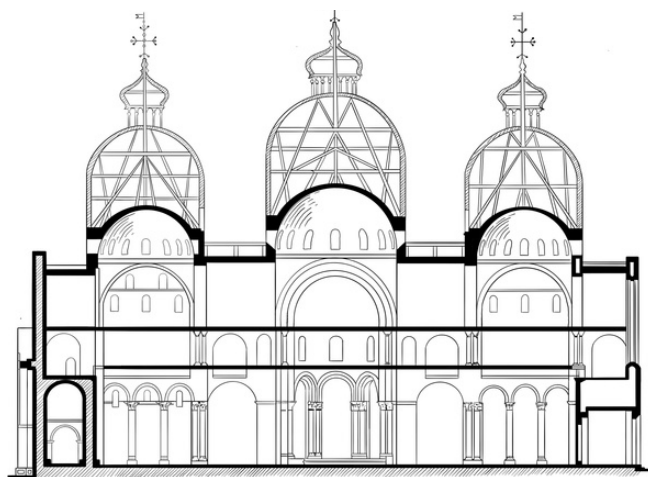
Najwa Abusafa



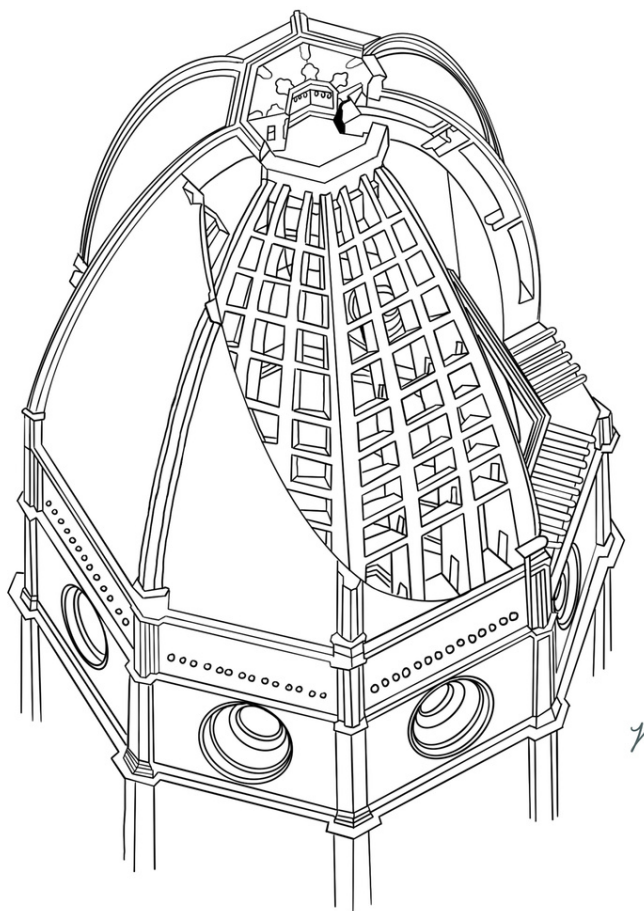
Ghada AlMeadadi



Alreem Alhajri



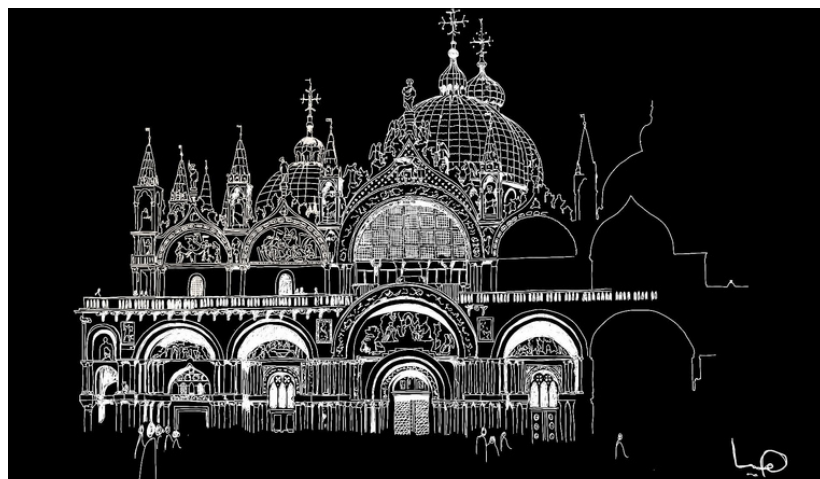
Najwa Abusafa



Yara Abdelsalam



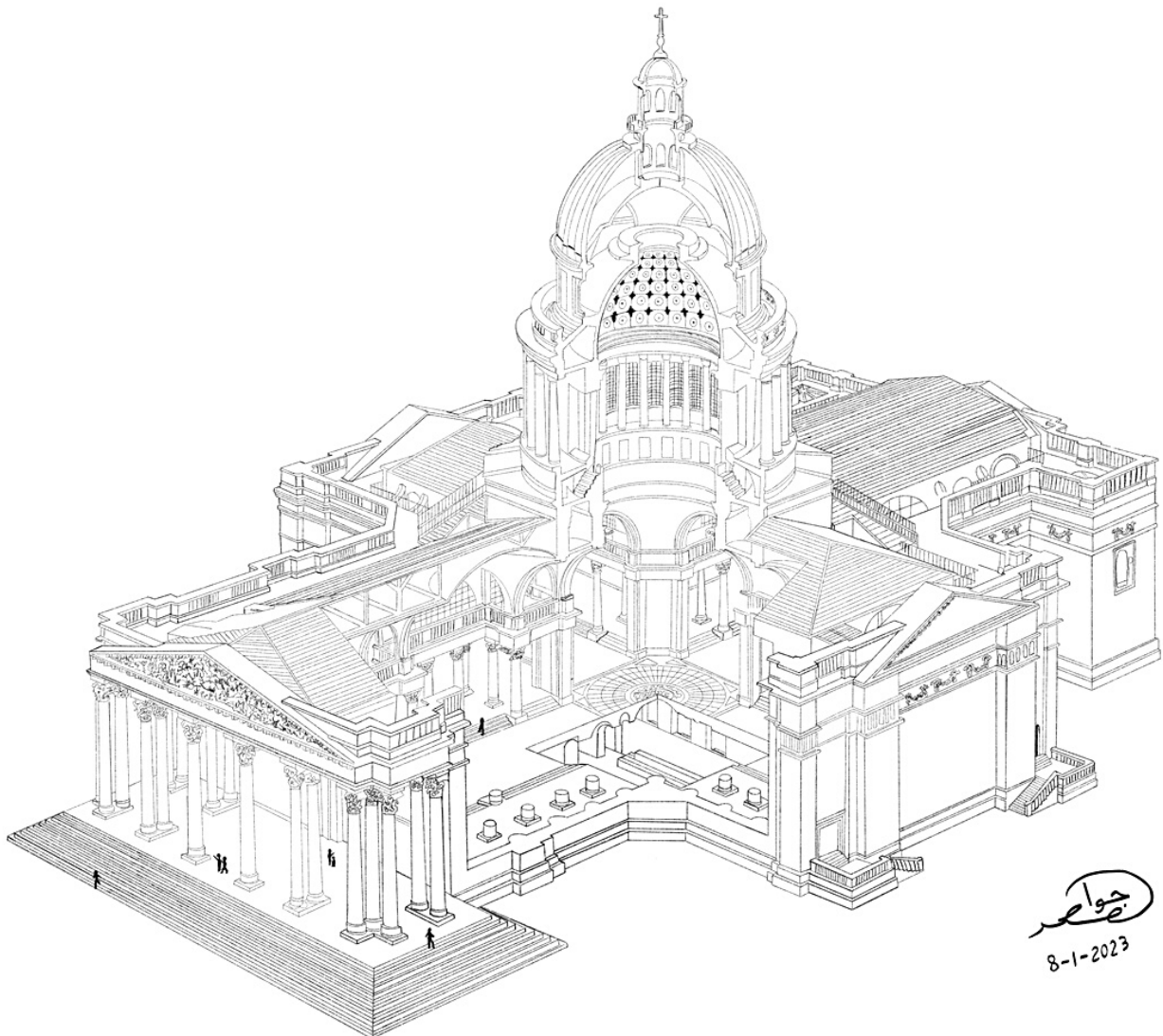
Luna Batarni



Haya AlMahmoud

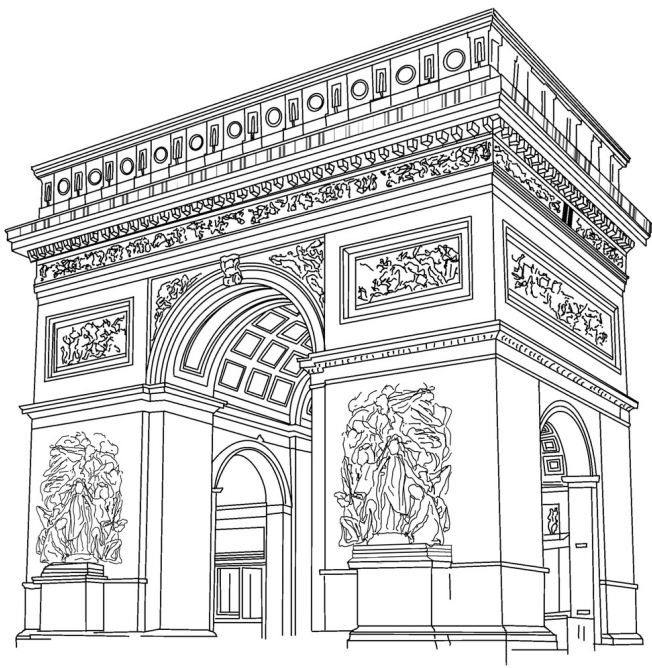


Mlak Almoukdad

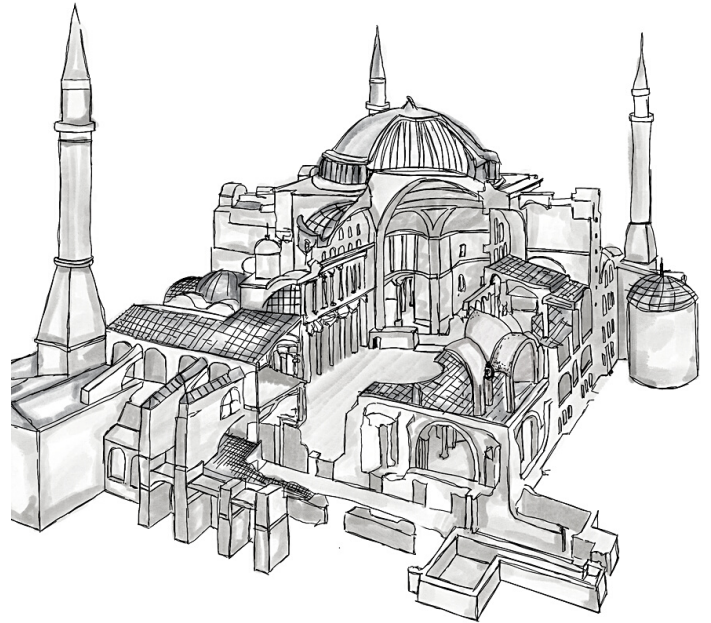


Jawaher Al-Obaidli

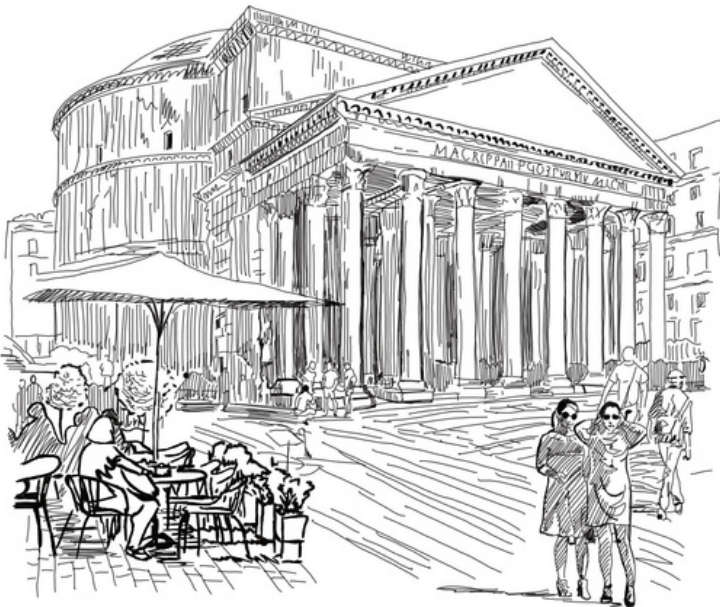
جواهر
8-1-2023



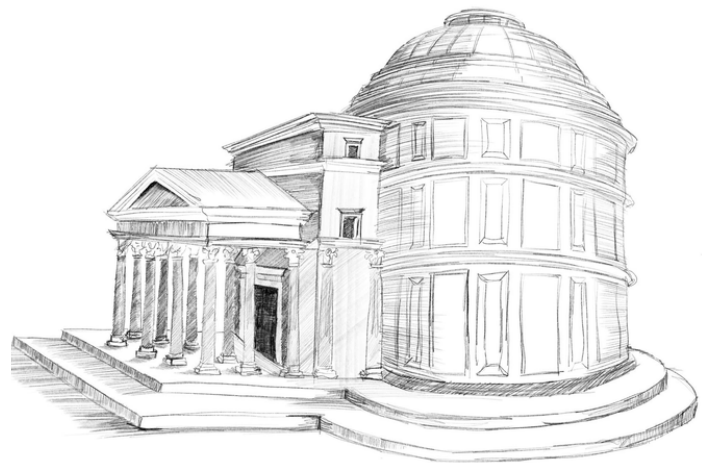
Yara Abdelsalam



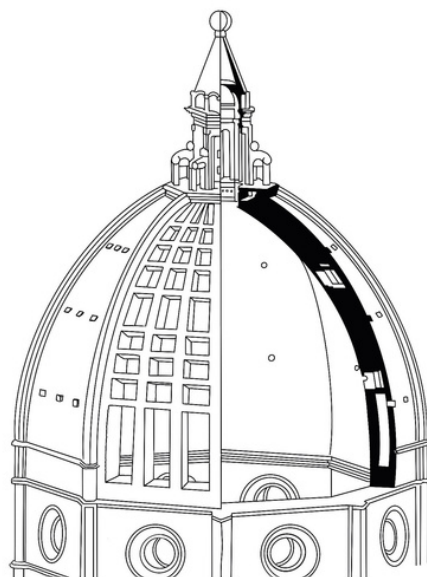
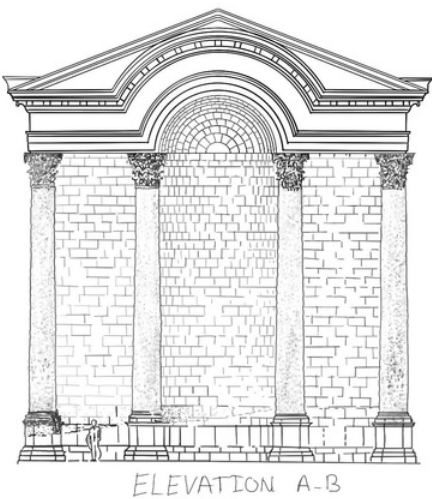
Fajar Al Ziyarah



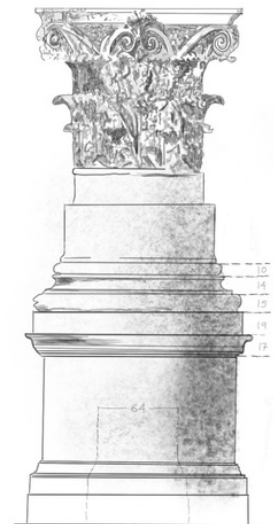
Aldana Al-Amadi

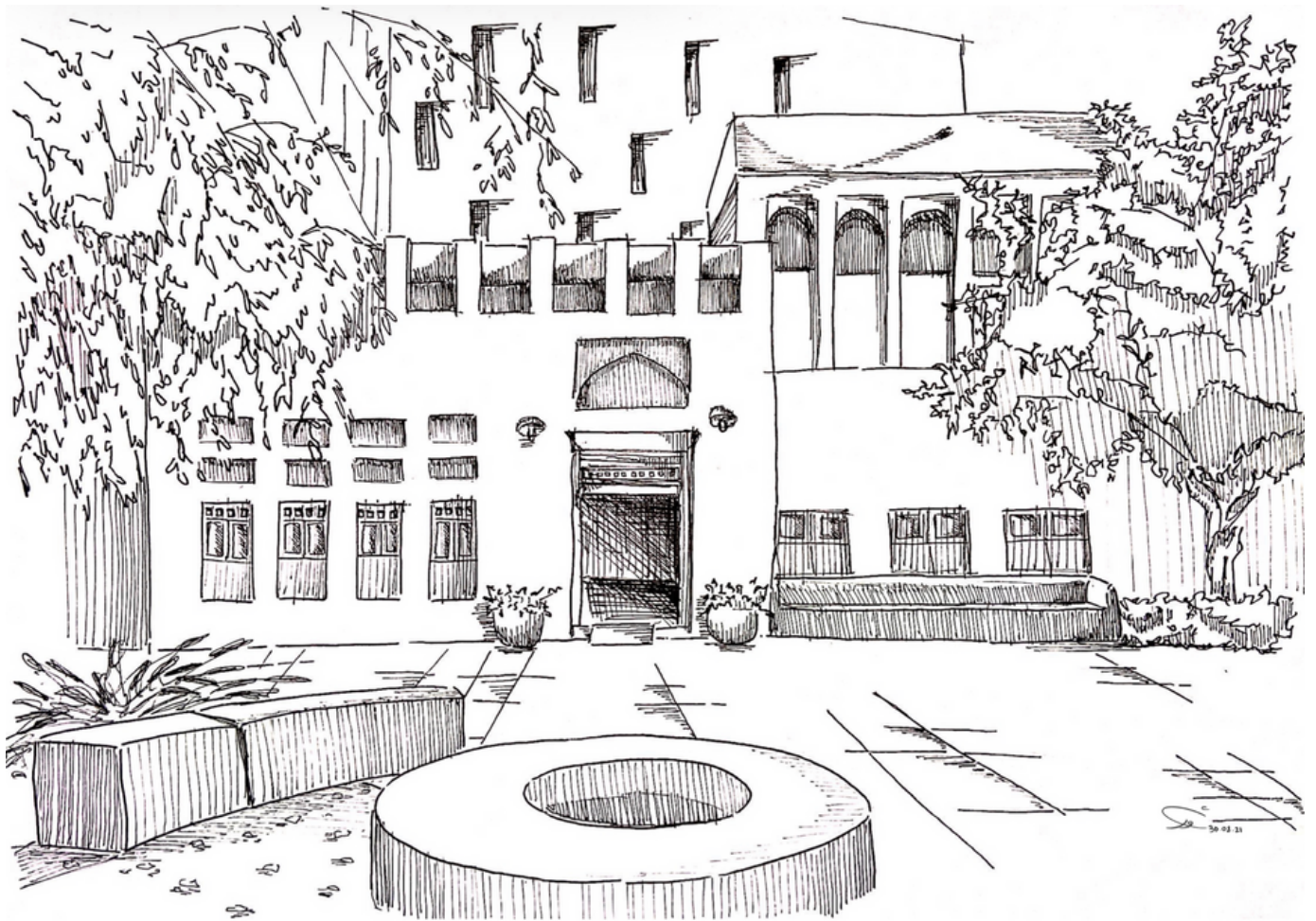


Sara Alyafei

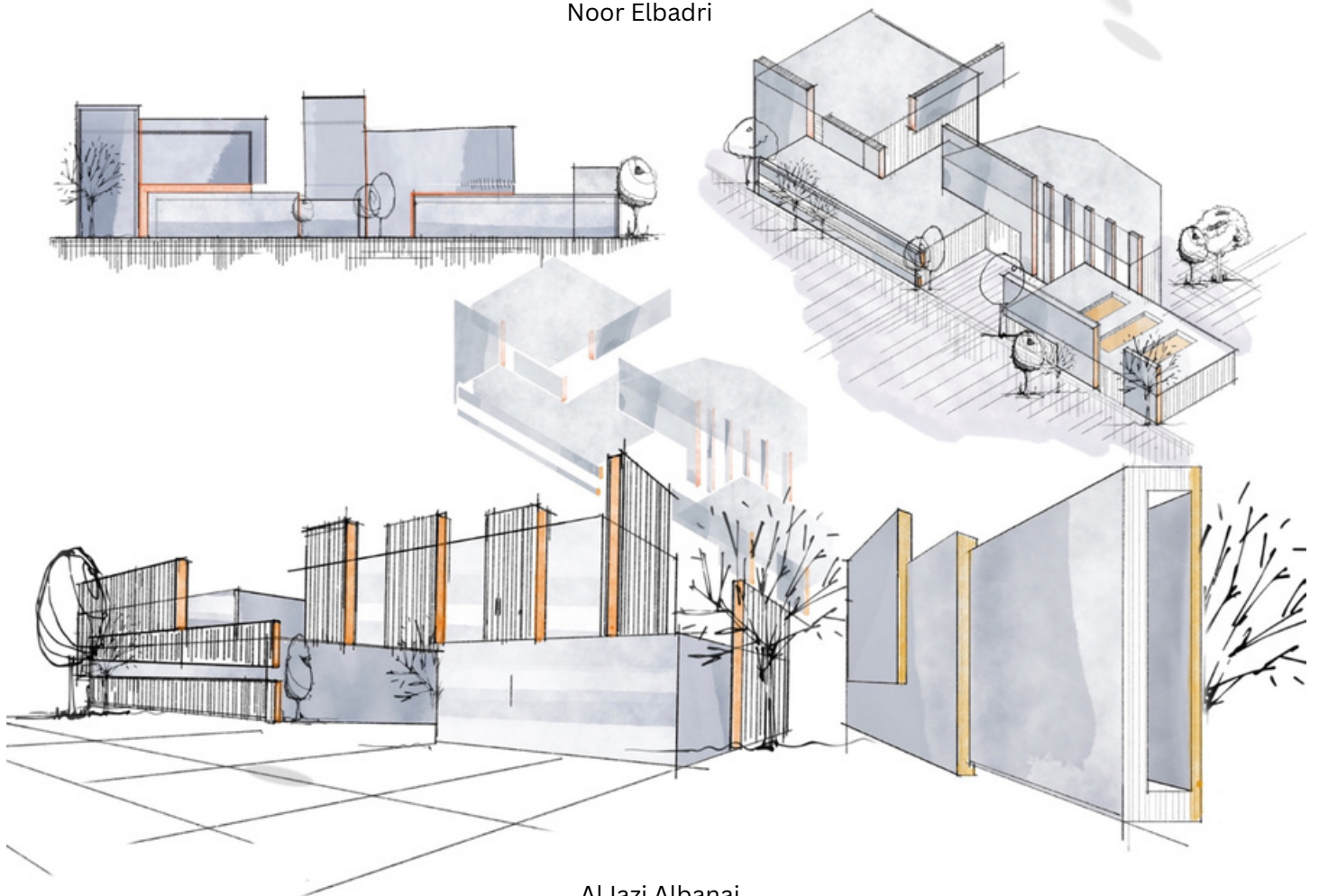


Mlak Almoukdad

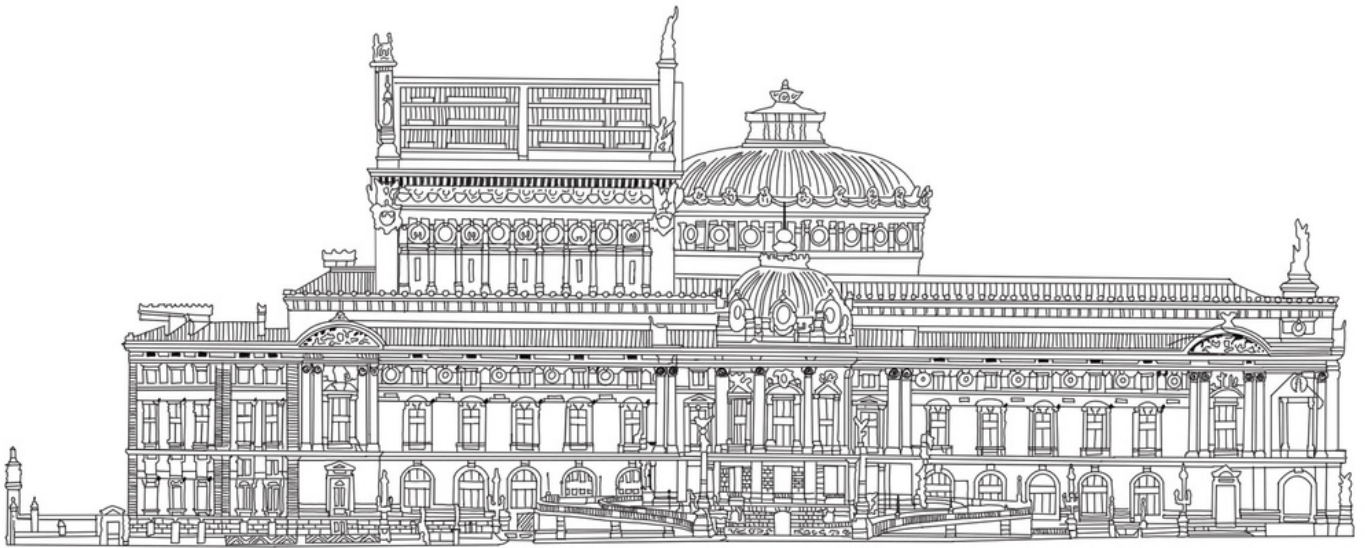




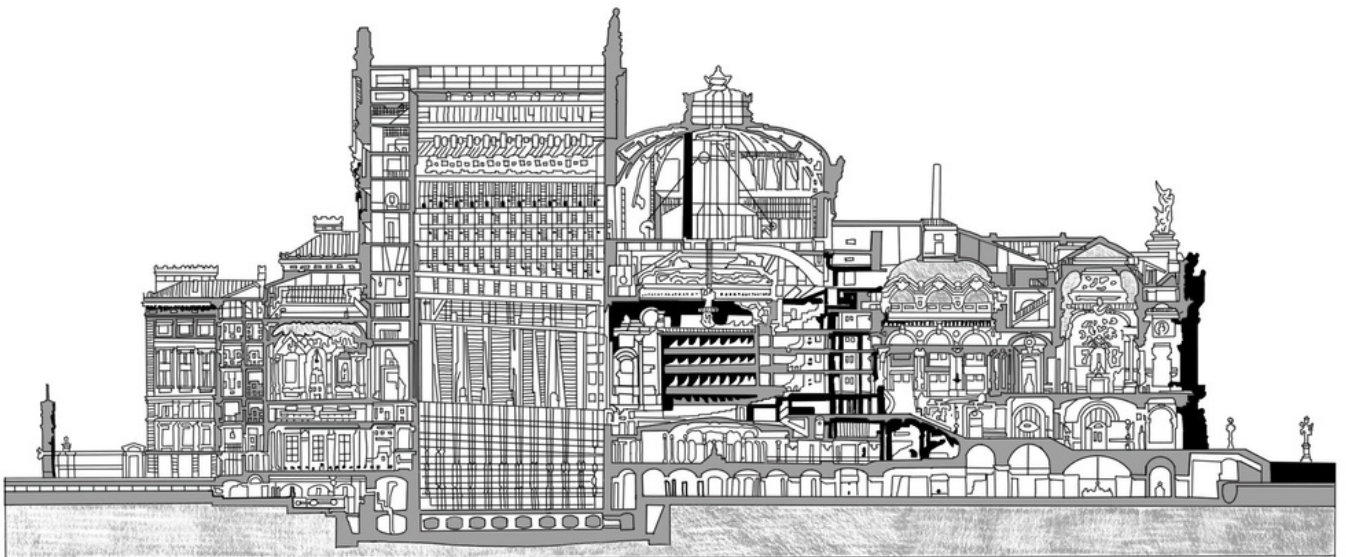
Noor Elbadri



AlJazi Albanai



Aldana Al-Amadi



Aldana Al-Amadi



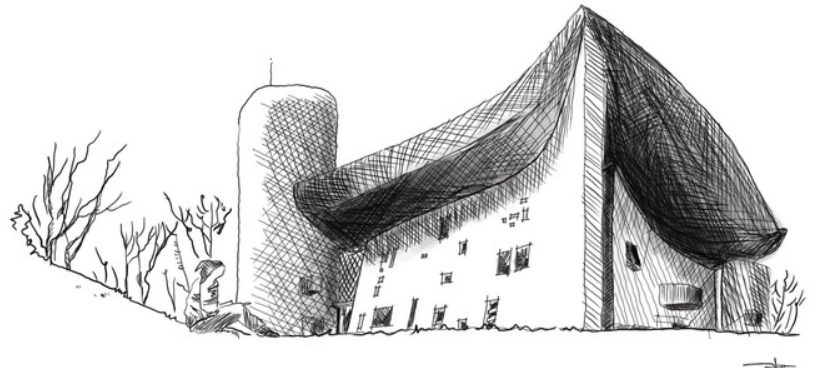
Maryam Alhajri



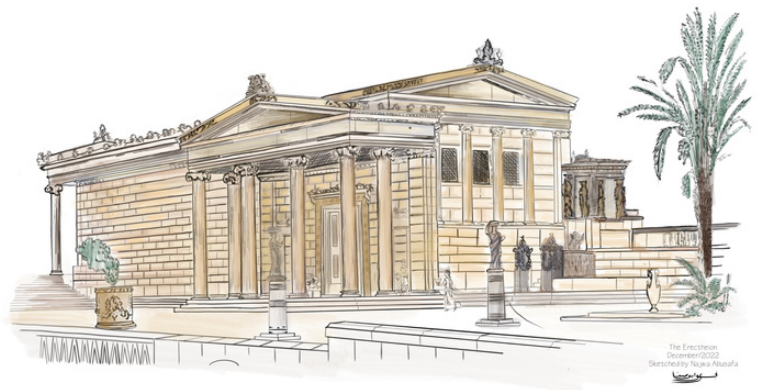
Mlak Almoukdad



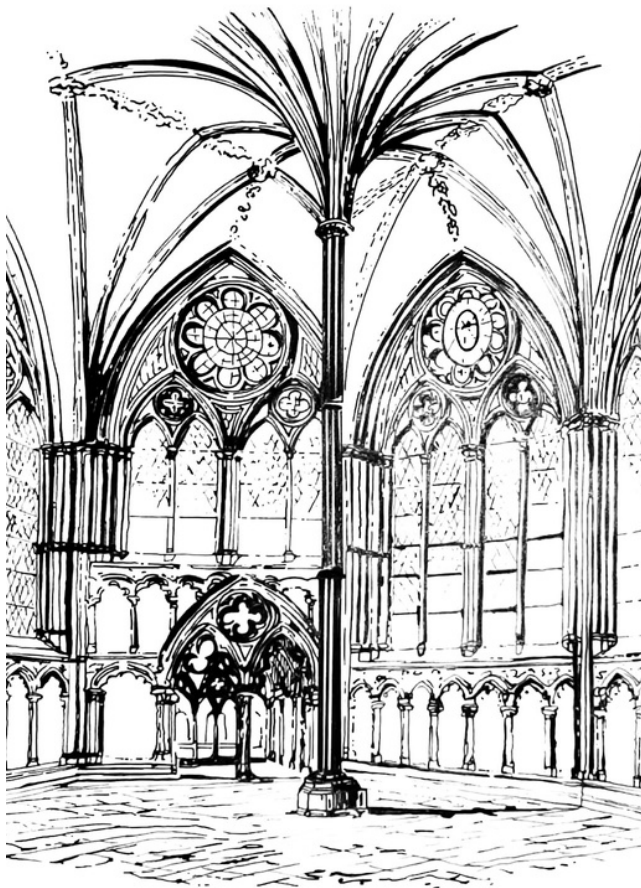
Reeja Faizan Ahmed



Naila Al-sheeb



Najwa Abusafa



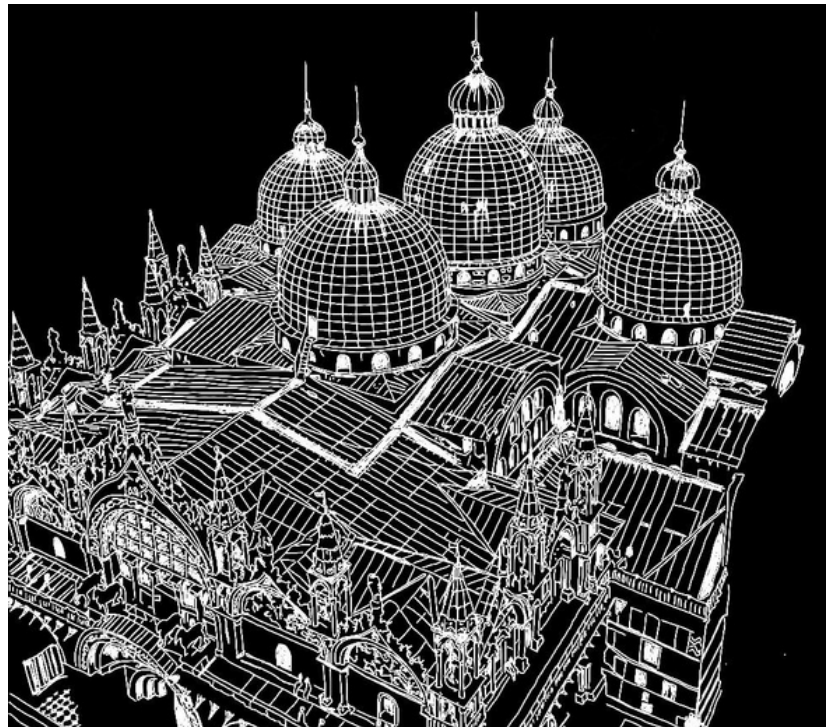
Reeja Faizan Ahmed



Haya AlMahmoud



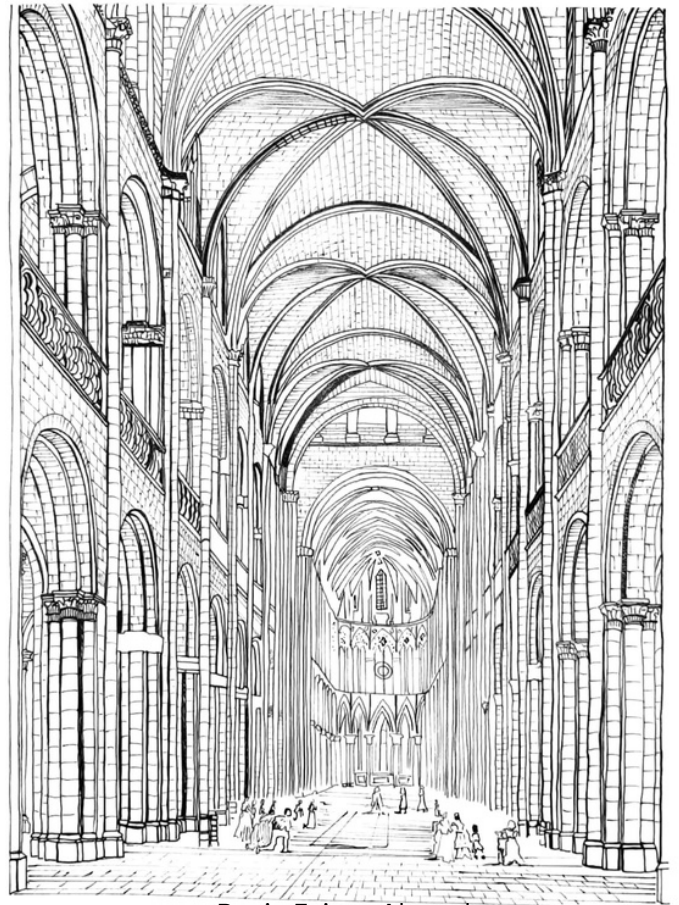
Luna Batarni



Haya AlMahmoud



Haya AlMahmoud

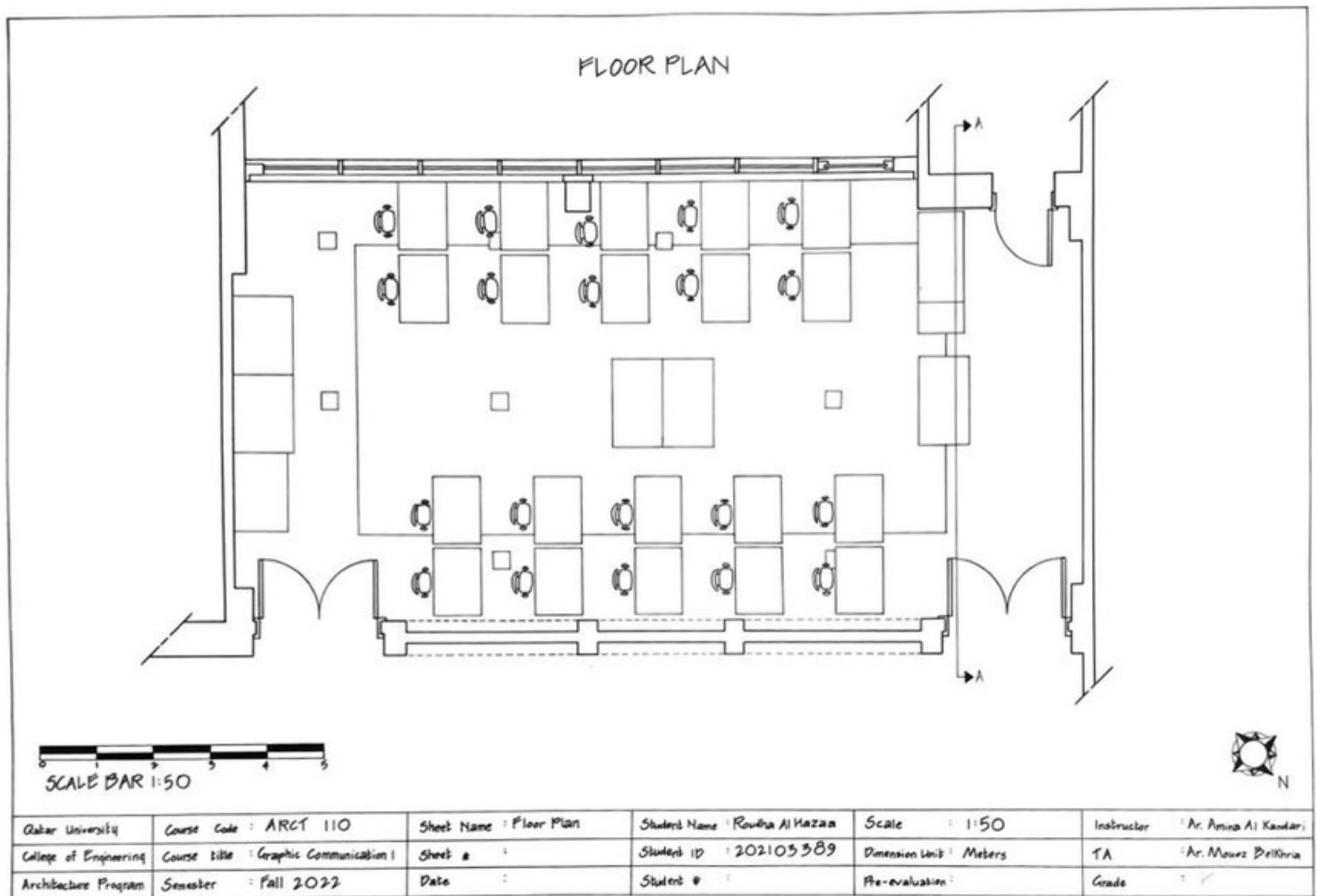


Reeja Faizan Ahmed

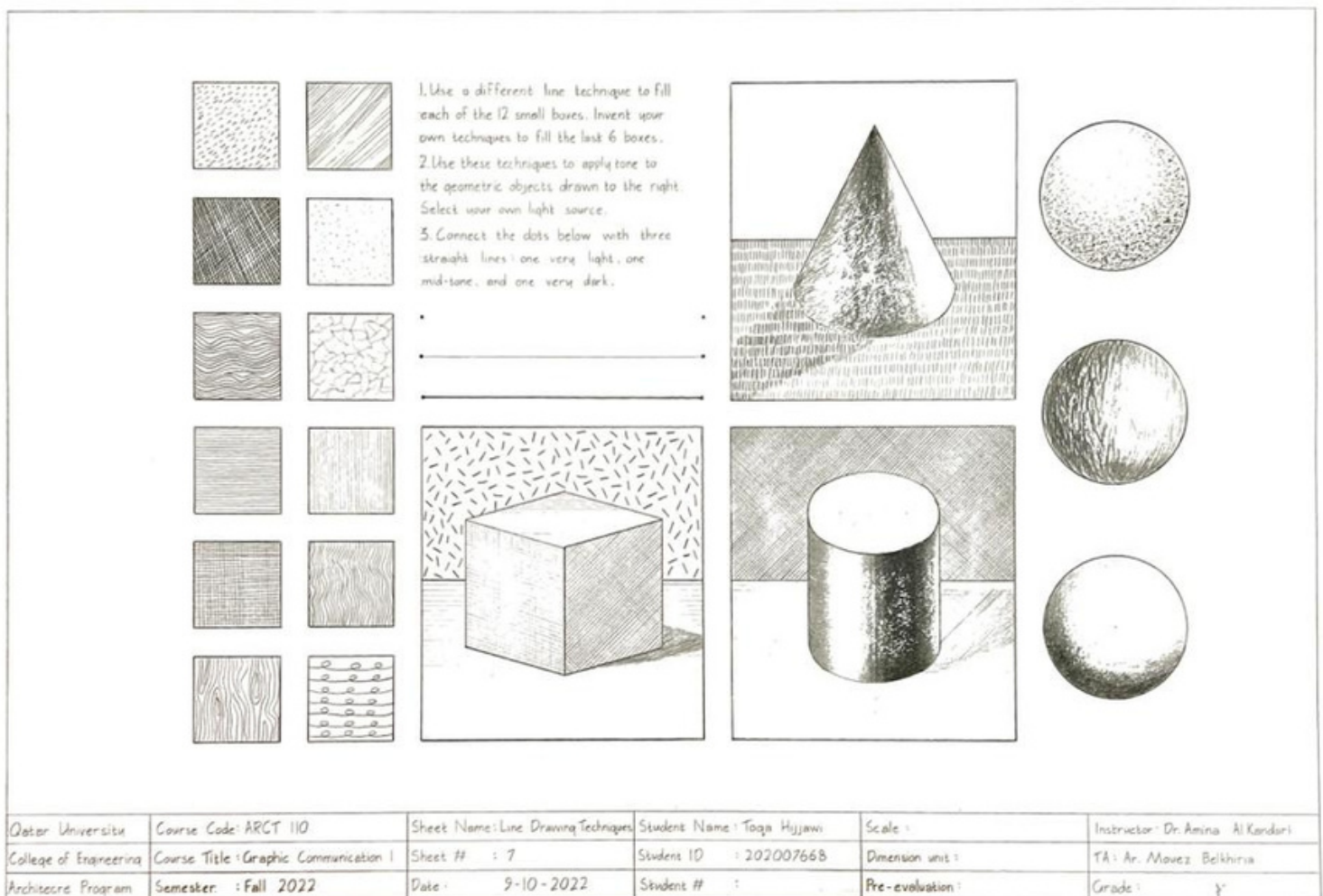
A SPOTLIGHT ON OUR FIRST YEARS AND SENIORS

<p> ABCDEFGHIJKLMNOPQRS TUVWXYZ ABCDEFGHIJKL MNOPQRSTUUVWXYZ 123456789101112131415 123456789101112131415 abcdefghijklmnopqrstuvw xyz abcdefghijklmnopqrst uvwx yz ABCDEFGHIJKLMNOPQRSTUUVWXYZ ABCDEFGHIJKLMNOPQRSTUUVWXYZ 123456789101112131415 123456789 101112131415 12345678910 123456 abcdefghijklmnopqrstuvwxyz abcdefghij klmnopqrstuvwxyz ABCDEFGHIJKLMNOPQRSTUUVWXYZ ABCDEFGHIJKLMNOPQRSTUUVWXYZ ABCDEFGHIJKLMNOPQRSTUUVWXYZ ABCDEFGHIJKLMNOPQRSTUUVWXYZ 123456789101112131415 123456789101112131415 123456789101112131415 123456789101112131415 123456789101112131415 123456789101112131415 abcdefghijklmnopqrstuvwxyz abcdefghijklmnopqrstuvwxyz abcdefghij klmnopqrstuvwxyz abcdefghijklmnopqrstuvwxyz </p>			<p> THE ARCHITECT SHOULD BE EQUIPPED WITH KNOWLEDGE OF MANY BRANCHE OF STUDY AND VARIED KINDS OF LEARN- ING FOR IT IS BY HIS JUDGMENT THAT ALL WORK DONE BY THE OTHER ARTS is put to test. the knowledqe is the child of practice and theory. practice is the continuous and regular exerise of employment. IT FOLLOWS, THEREFORE, THAT ARCHITECTS WHO HAVE AIMED AT ACQUIRING MANUAL SKILL WITH- OUT SCHOLARSHIP HAVE NEVER BEEN ABLE TO REACH A POSITION OF AUTHORITY TO CORRESPOND to thier pains. while those who relied only upon theories and scholarship where obviously hunting the shadow. IN ALL MATTERS, BUT PARTICULARLY IN ARCHITECTURE, THERE ARE THESE TWO POINTS :- THE THING SIGNIFIED, AND THAT WHICH GIVES IT ITS SIGNIFICANCE. THAT WHICH IS SIGNIFIED IS THE SUBJECT OF WHICH WE MAY BE SPEAKING, AND THAT WHICH GIVES SIGNIFICANCE IS A DEMONSTRATION ON SCIENTIFIC principles. it appears, then, that one who professes himself an architect should be well versed in both directions: he ought, therefore, to be naturally gifted. </p>		
Qatar University	Course Code : ARCT 110	Sheet Name : Lettering	Student Name : Shamsiya Shihab	Scale :	Instructor : Ar. Amina Al Kandari
College of Engineering	Course Title : Graphic Communication	Sheet # : 01	Student ID : 202107945	Dimension Unit :	TA : Ar. Moutz Belkhiria
Architecture Program	Semester : Fall 2022	Date : 28/08/2022	Student # : 202107945	Pre Evaluation :	Grade :

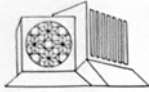
Shamsiya Shihab



Roudha Al Hazaa



Toqa Hijjam



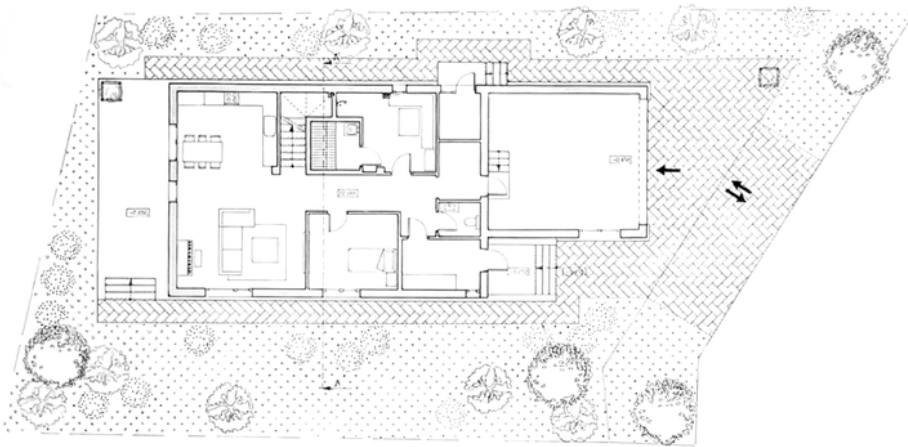
COLLEGE OF
ENGINEERING
QATAR UNIVERSITY

DEPARTMENT OF ARCHITECTURE AND URBAN PLANNING
BACHELOR OF ARCHITECTURE
ARCT 110 L51 : GRAPHIC COMMUNICATION I - FALL 2022

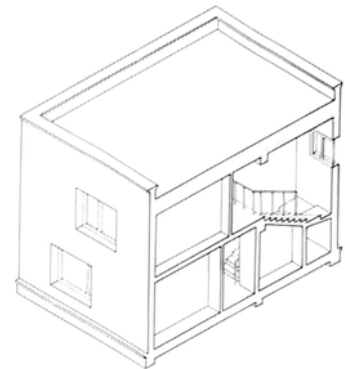
PHASE : FINAL SUBMISSION
INSTRUCTORS : DR. AMINA AL KANDARI, ARCH. MOUEZ BELKHIRIA
SUBMITTED BY : SARAMUQADAS - 202110667



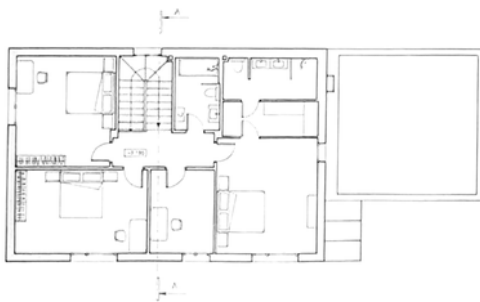
VILLA PROJECT



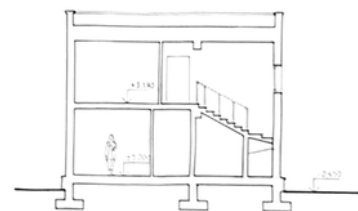
Site Plan



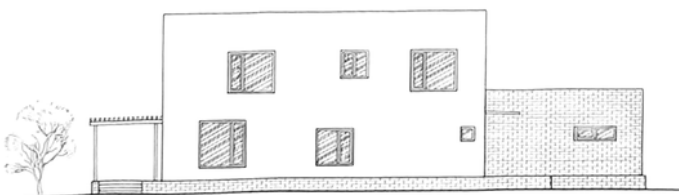
Isometric Section A-A



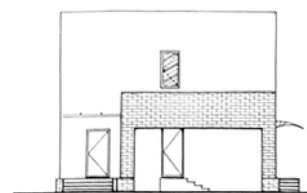
First Floor



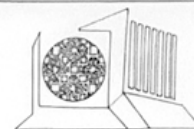
Section A-A



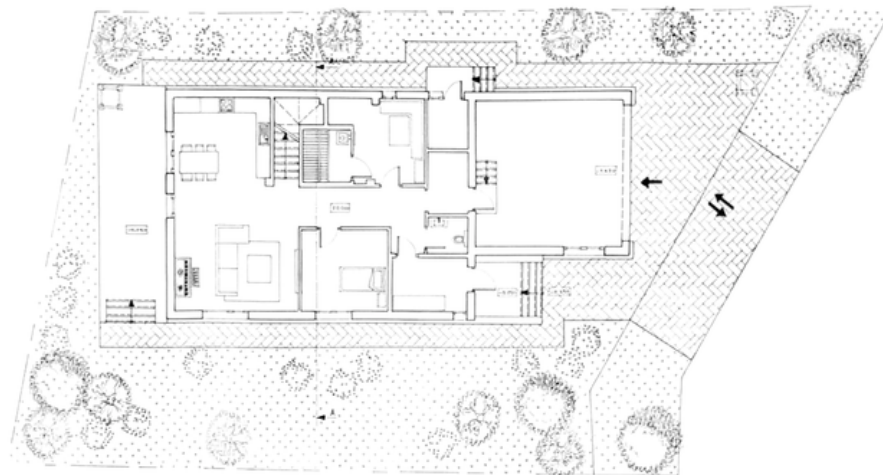
South Elevation



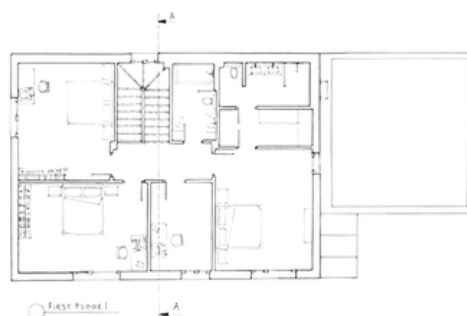
East Elevation



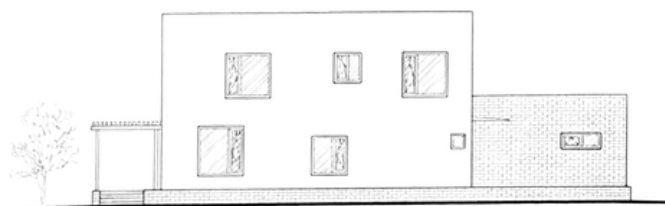
VILLA PROJECT



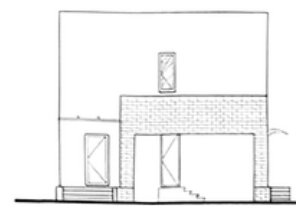
Site Plan



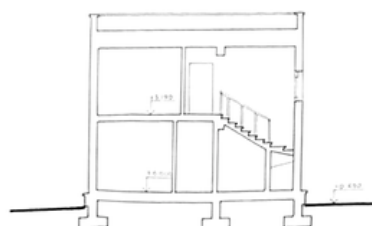
First Floor



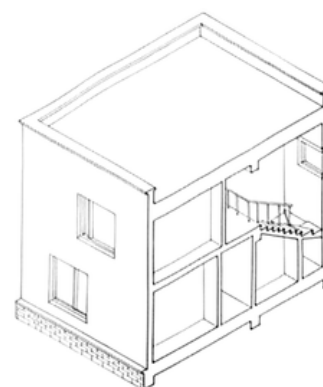
South Elevation



East Elevation

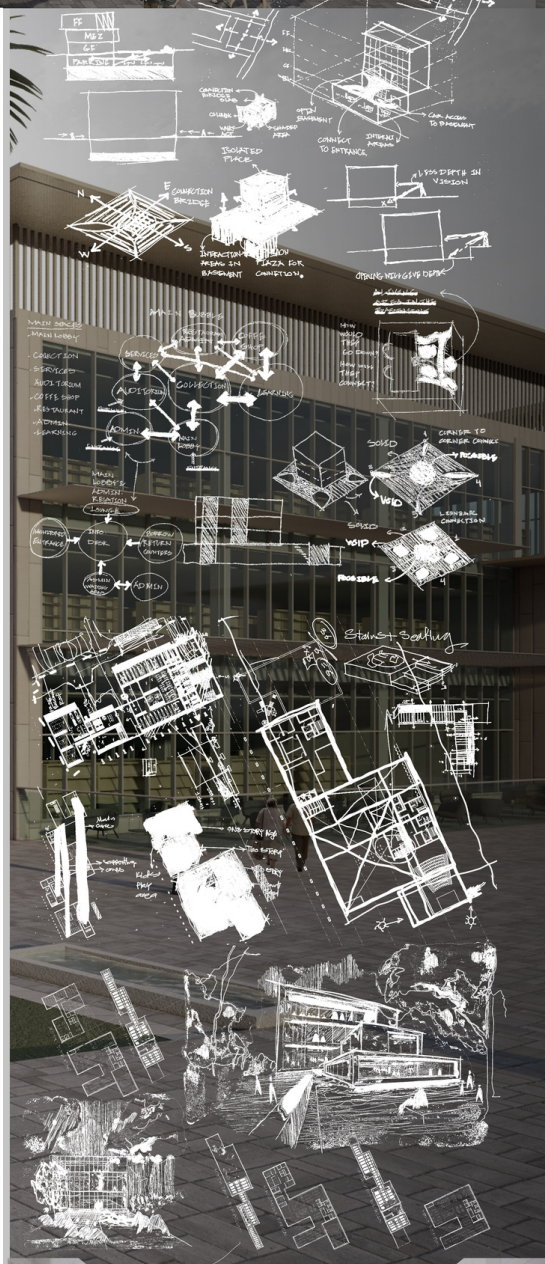
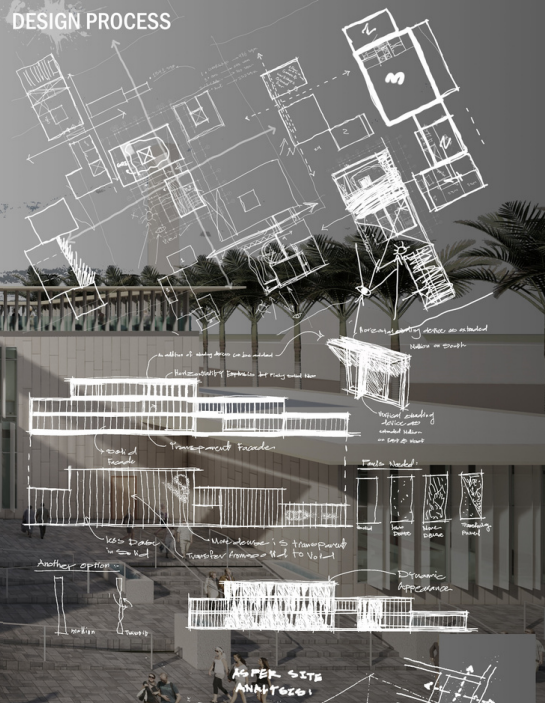


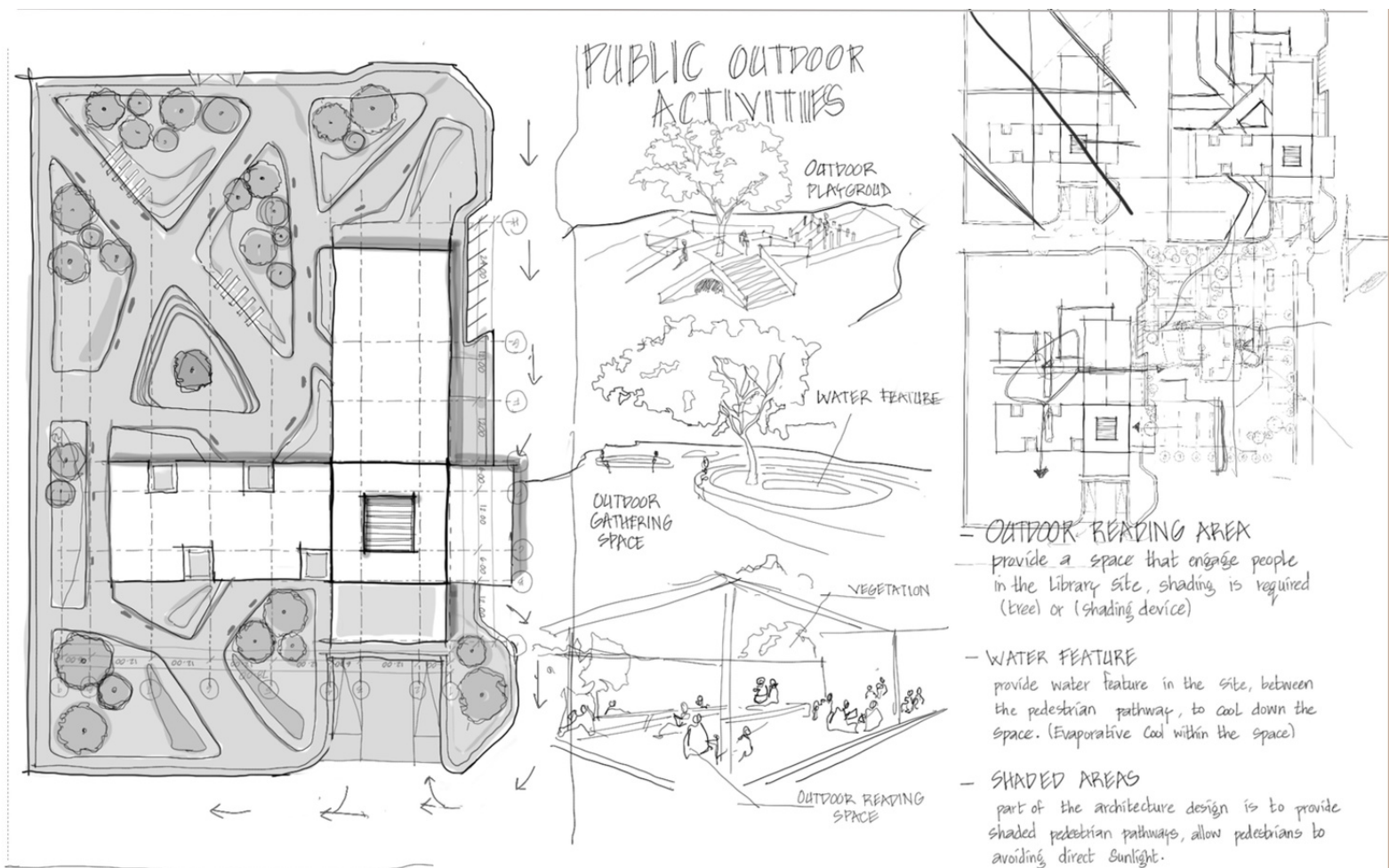
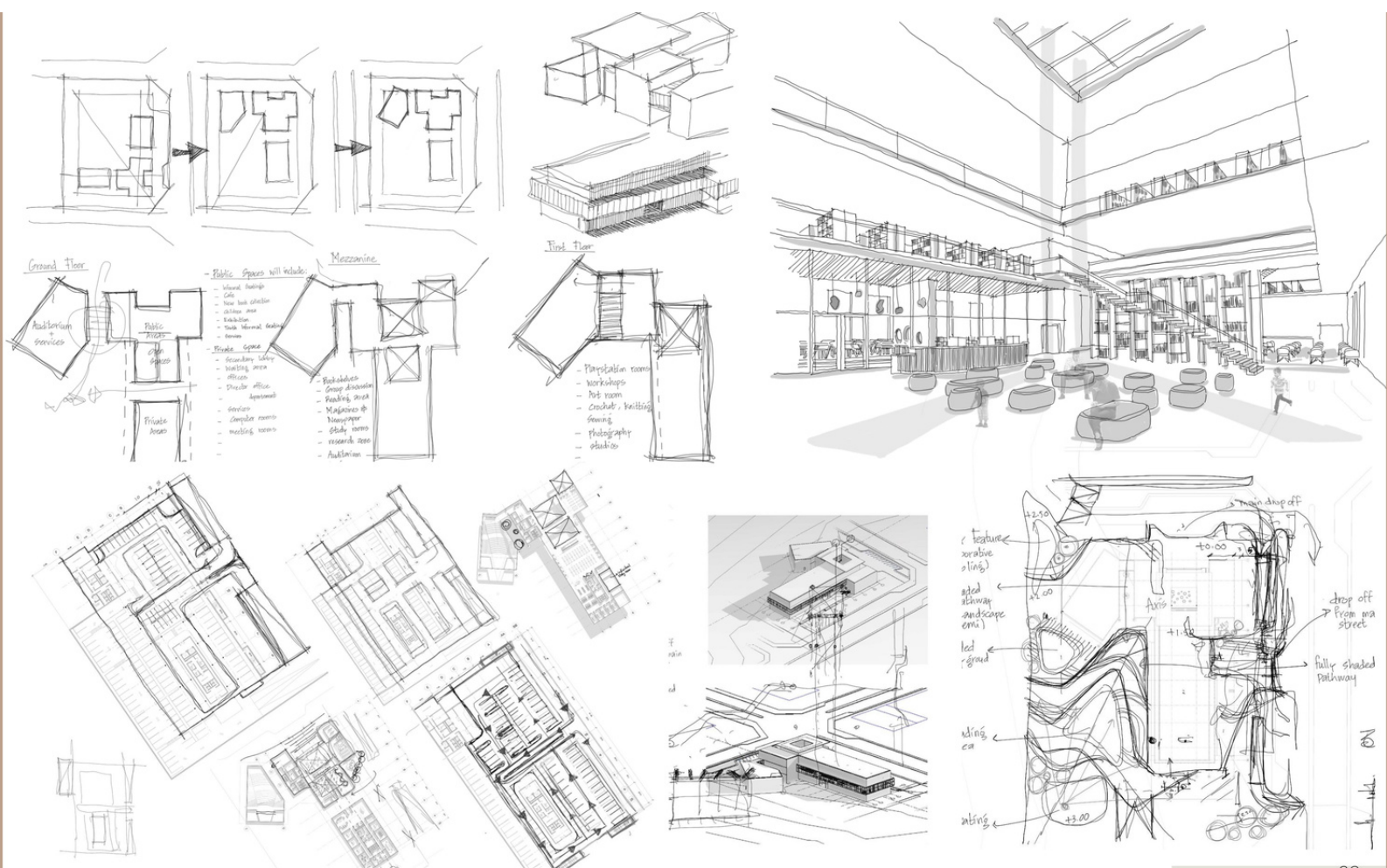
Section A-A

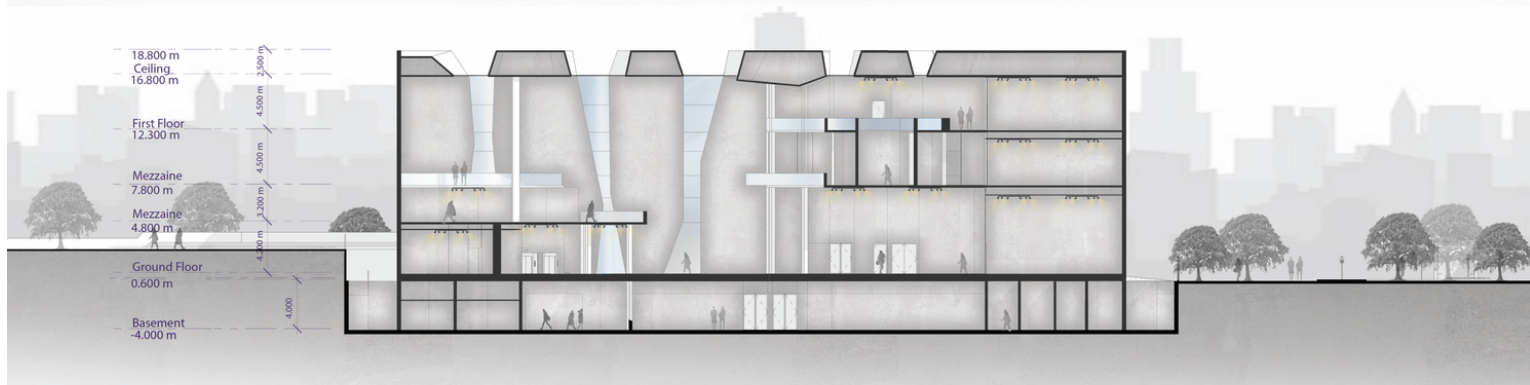


Isometric

NADA HAMAM | 201802279

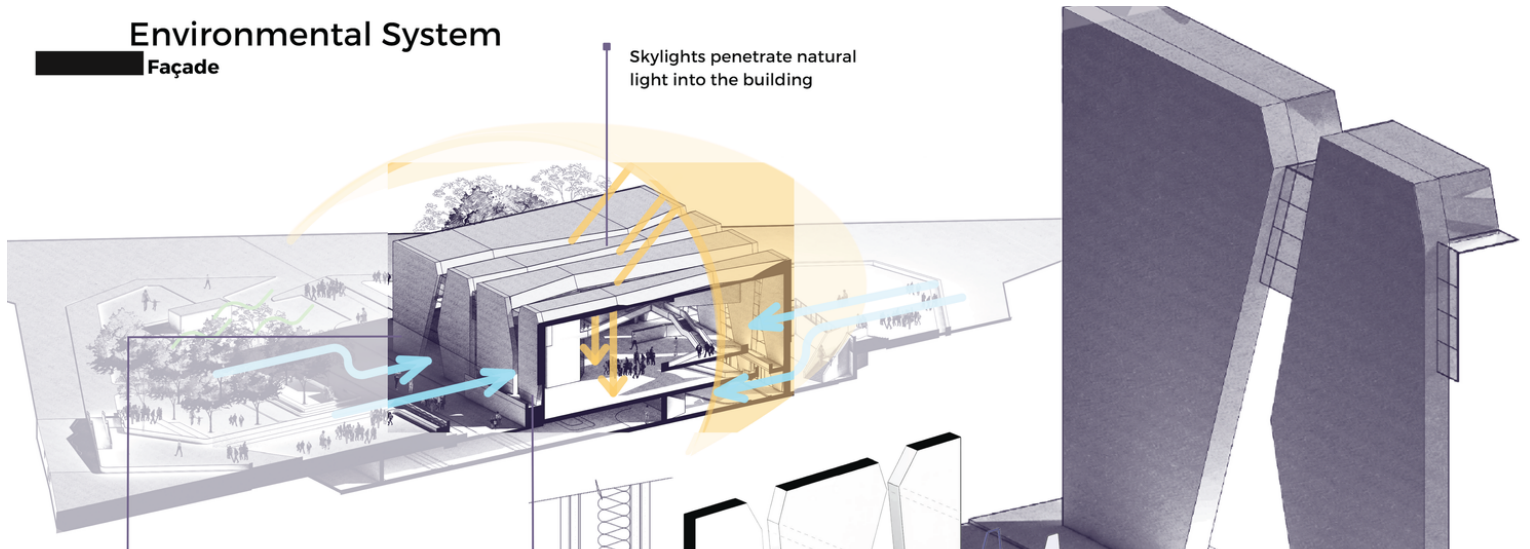




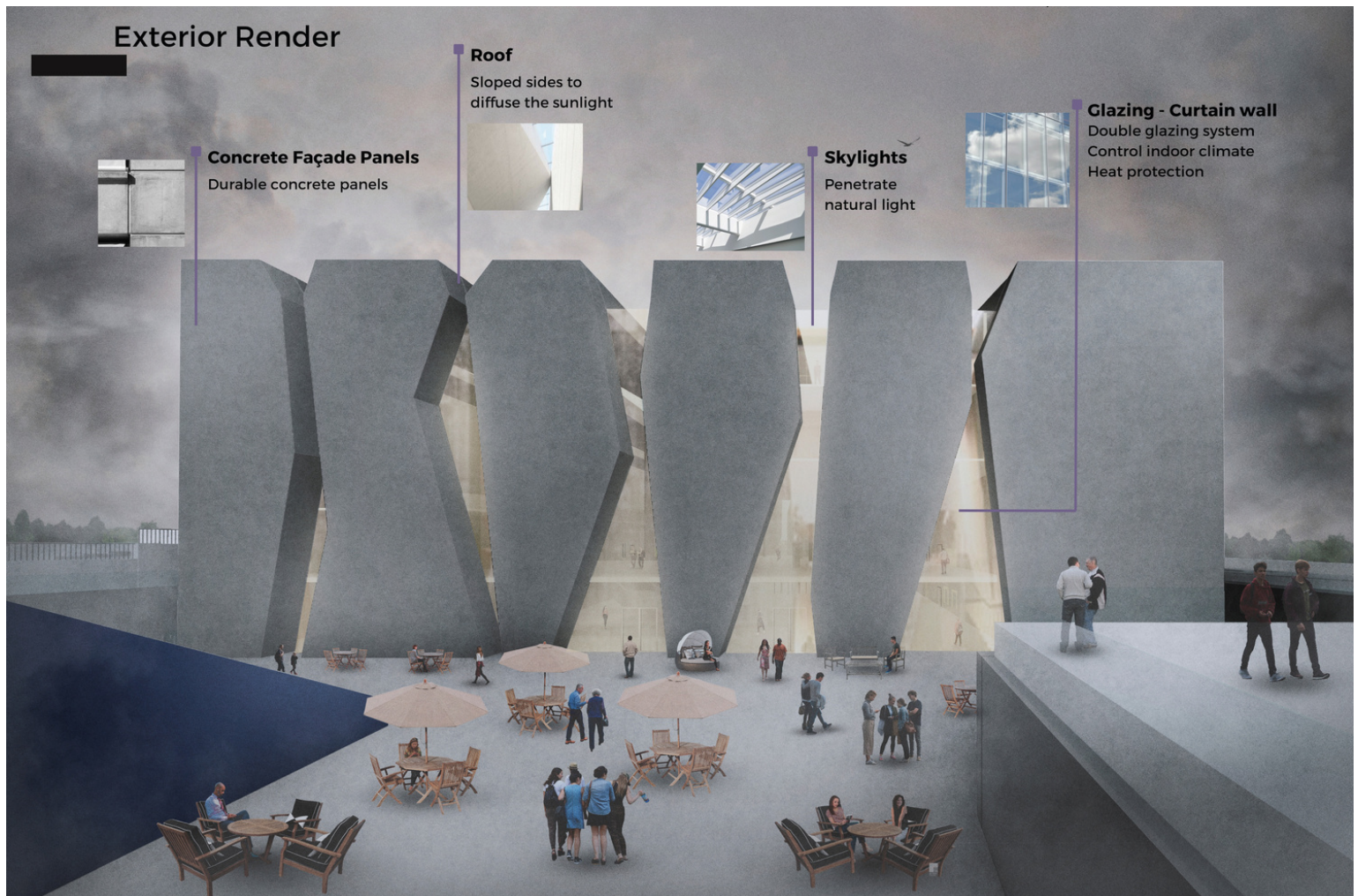


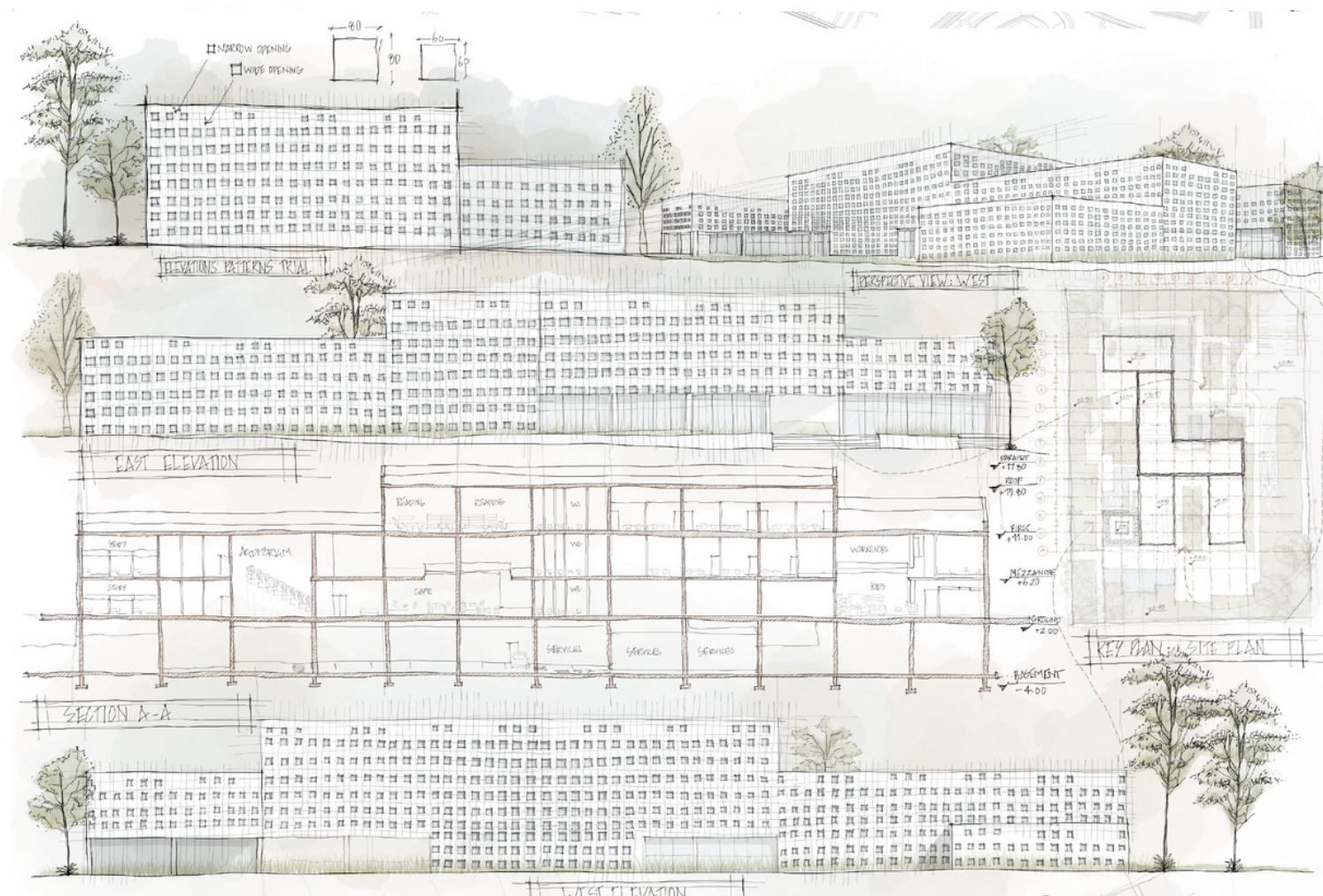
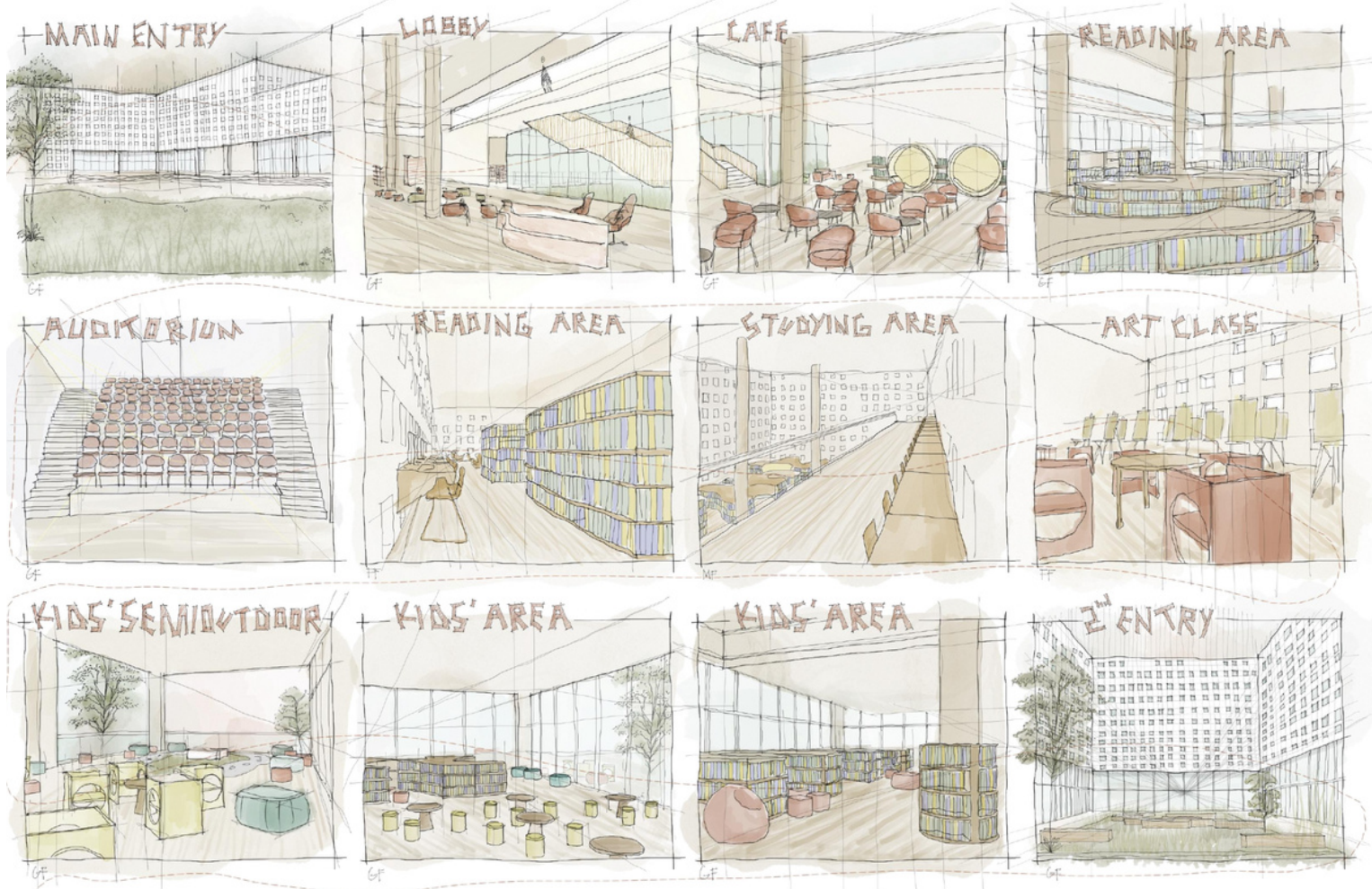
Environmental System

Façade

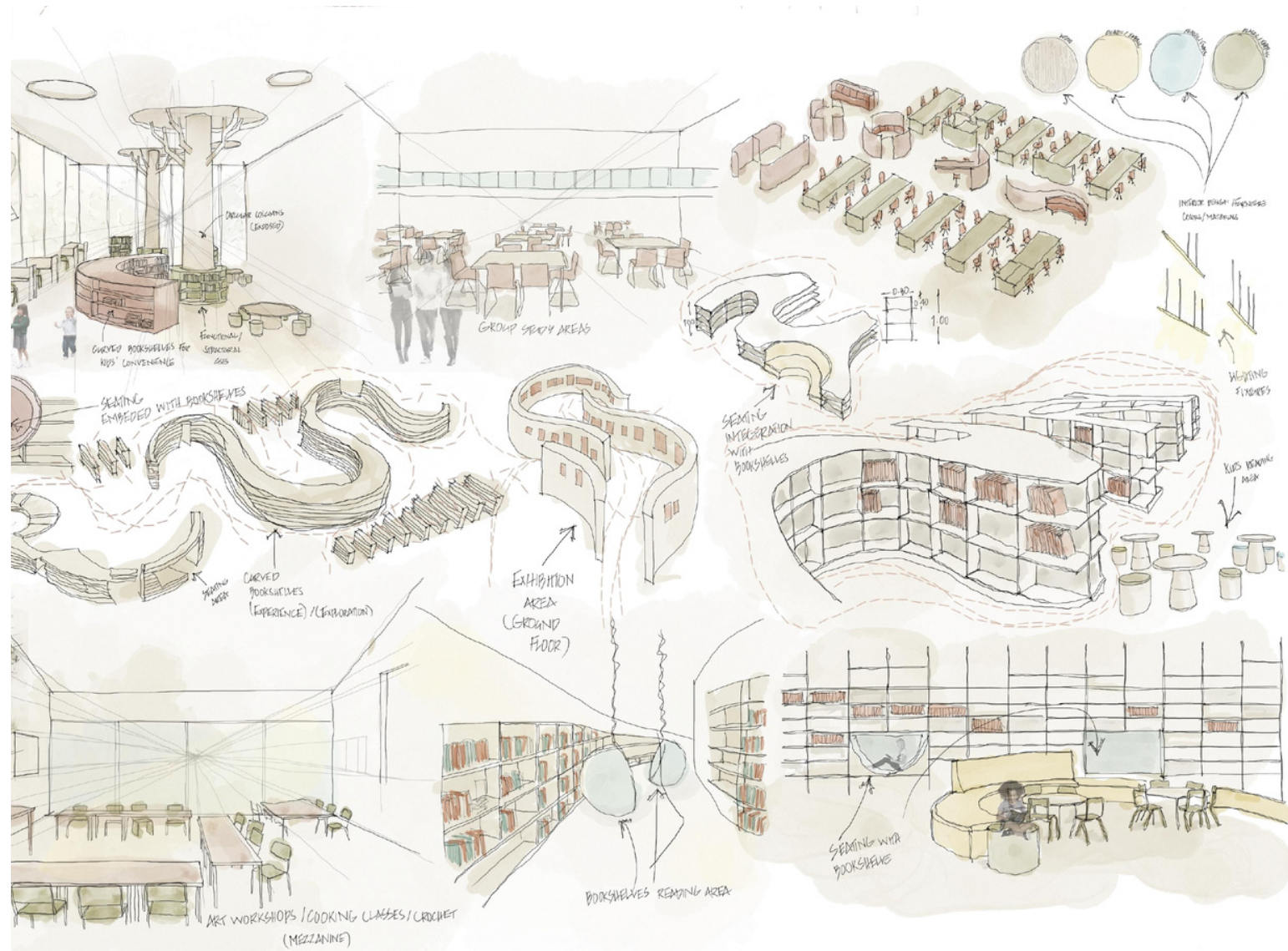


Exterior Render

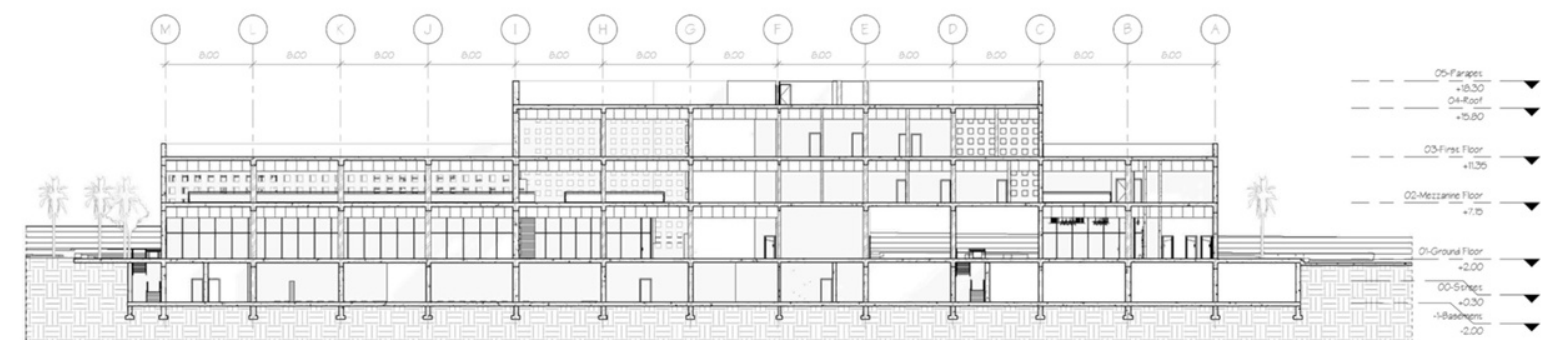




Maryam AlMulla



East Elevation



Section A-A

Maryam AlMulla



Department of Architecture and
Urban Planning (DAUP),
Building H07, Qatar University,
Doha, Qatar



<https://www.qu.edu.qa/engineering/academics/architecture>



www.linkedin.com/in/qudaup



[architecture_qu](https://www.instagram.com/architecture_qu)



كلية الهندسة
College of Engineering
QATAR UNIVERSITY جامعة قطر